



evergoldcorp.

Exploring the Northern Toodoggone

TSXV: EVER | evergoldcorp.ca

April 2026

Cautionary Statement Regarding Forward-Looking Information

This presentation includes certain “forward-looking statements” which are not comprised of historical facts. Forward-looking statements include estimates and statements that describe the Company’s future plans, objectives or goals, including words to the effect that the Company or management expects a stated condition or result to occur. Forward-looking statements may be identified by such terms as “believes”, “anticipates”, “expects”, “estimates”, “may”, “could”, “would”, “will”, or “plan”. Since forward-looking statements are based on assumptions and address future events and conditions, by their very nature they involve inherent risks and uncertainties. Although these statements are based on information currently available to the Company, the Company provides no assurance that actual results will meet management’s expectations. Risks, uncertainties and other factors involved with forward-looking information could cause actual events, results, performance, prospects and opportunities to differ materially from those expressed or implied by such forward-looking information. Factors that could cause actual results to differ materially from such forward-looking information include, but are not limited to failure to complete the offering of convertible debentures on the terms as announced or at all, failure to identify mineral resources, delays in obtaining or failures to obtain required governmental, environmental or other project approvals, political risks, inability to fulfill the duty to accommodate First Nations, uncertainties relating to the availability and costs of financing needed in the future, changes in equity markets, inflation, changes in exchange rates, fluctuations in commodity prices, delays in the development of projects, capital and operating costs varying significantly from estimates and the other risks involved in the mineral exploration and development industry, and those risks set out in the Company’s public documents filed on SEDAR. Although the Company believes that the assumptions and factors used in preparing the forward-looking information in this news release are reasonable, undue reliance should not be placed on such information, which only applies as of the date of this news release, and no assurance can be given that such events will occur in the disclosed time frames or at all. The Company disclaims any intention or obligation to update or revise any forward-looking information, whether as a result of new information, future events or otherwise, other than as required by law.

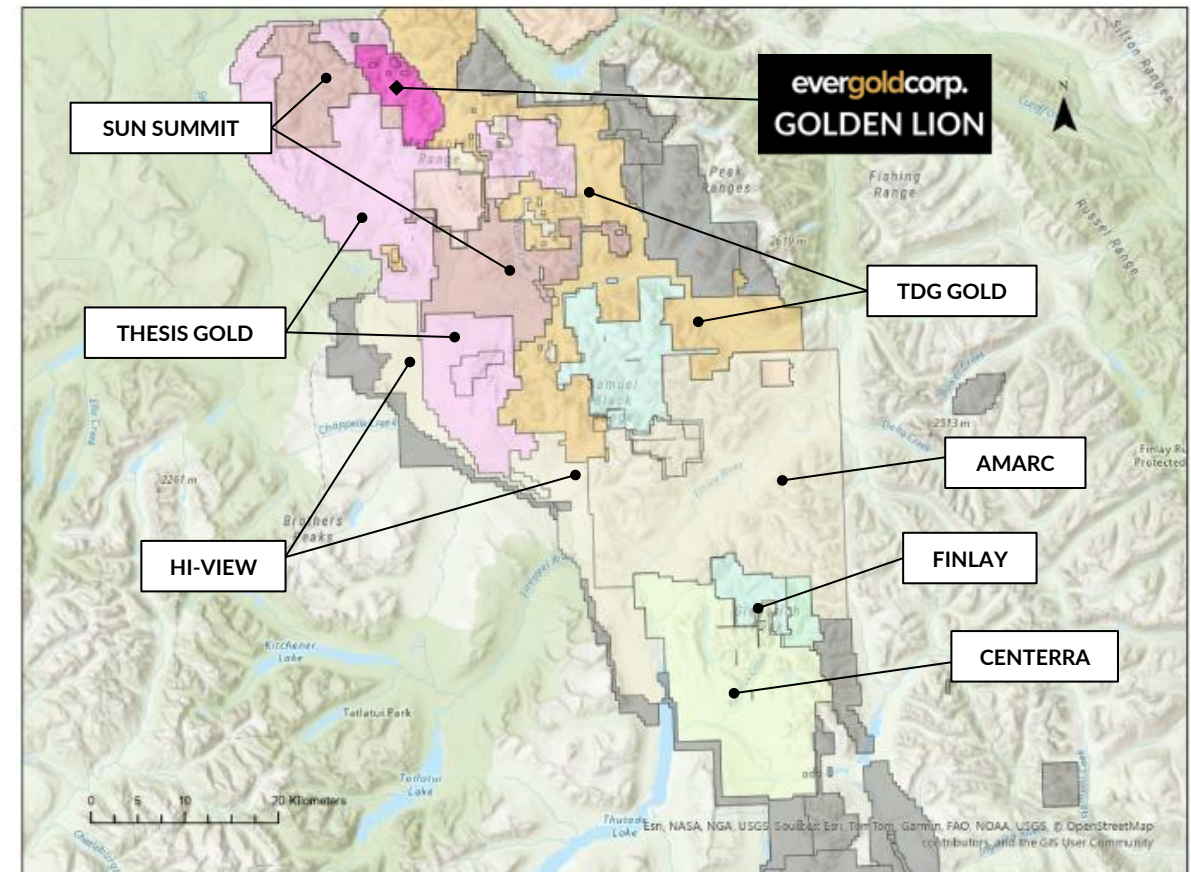
Evergold’s Qualified Person as defined by National Instrument 43-101 is Charles J. Greig, M.Sc., P.Geo. Mr. Greig has reviewed and approved the technical information in this presentation

Toodoggone

A PROVEN CANADIAN MINING DISTRICT

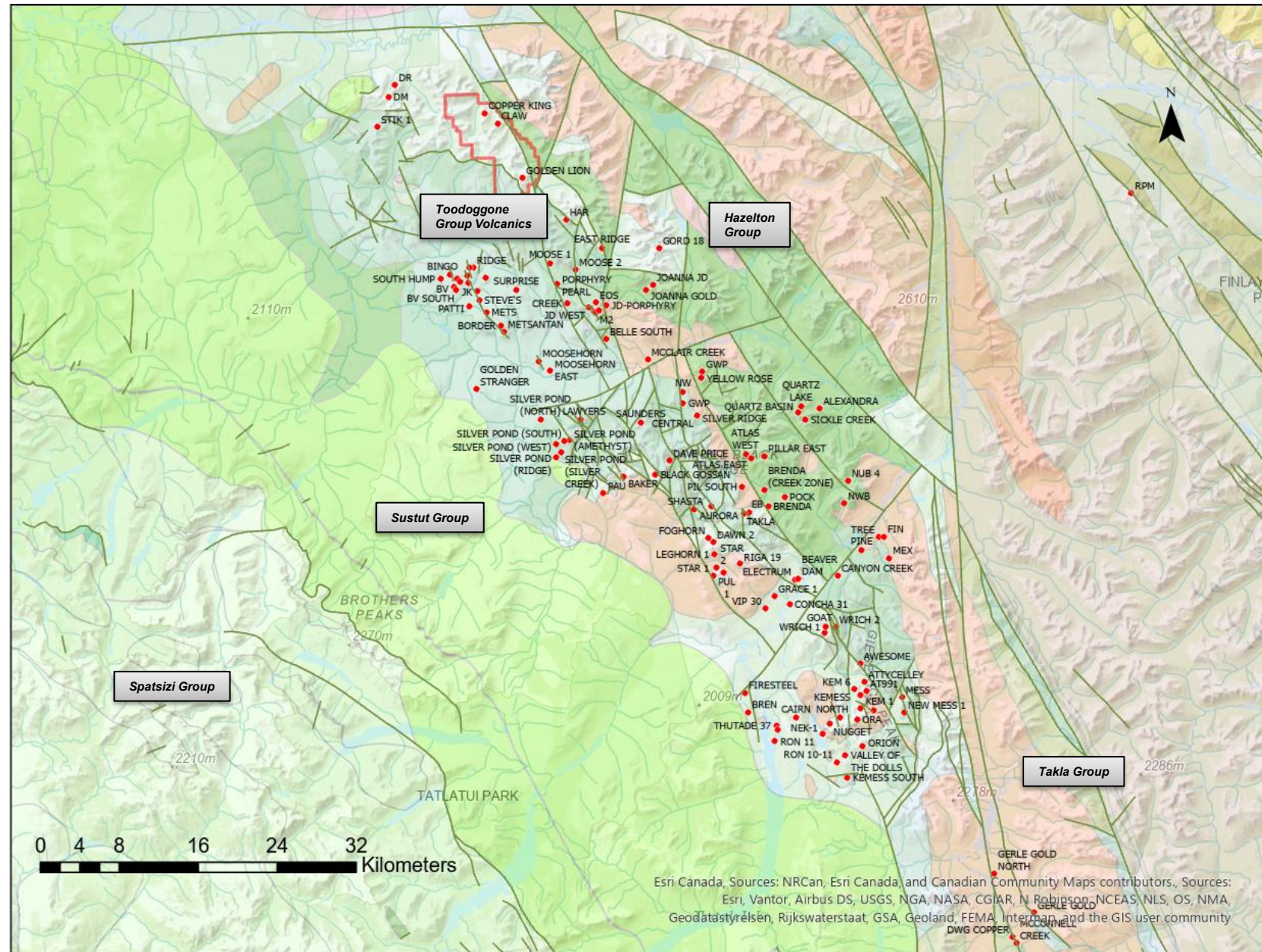
- Epithermal & porphyry deposits and targets

COMPANY	PROJECT	GLOBAL RESOURCE*	MARKET CAP*
Centerra	Kemess, Kemess East, Kemess u/g	5Moz Au 17.9Blbs Cu	C\$5Bn
Thesis	Ranch, Lawyers	4.7 Moz AuEq	C\$780M
TDG	Shasta Aurora West	1Moz AuEq New Discovery	C\$308M
Amarc Freeport JV	Aurora	New Au-Ag-Cu Discovery	C\$335M
Sun Summit	JD	Exploration	C\$36M
Finlay Mineral/ Freeport JV	Atty/Pil	Exploration	C\$20M
Evergold Corp	Golden Lion	Exploration	C\$13.6M

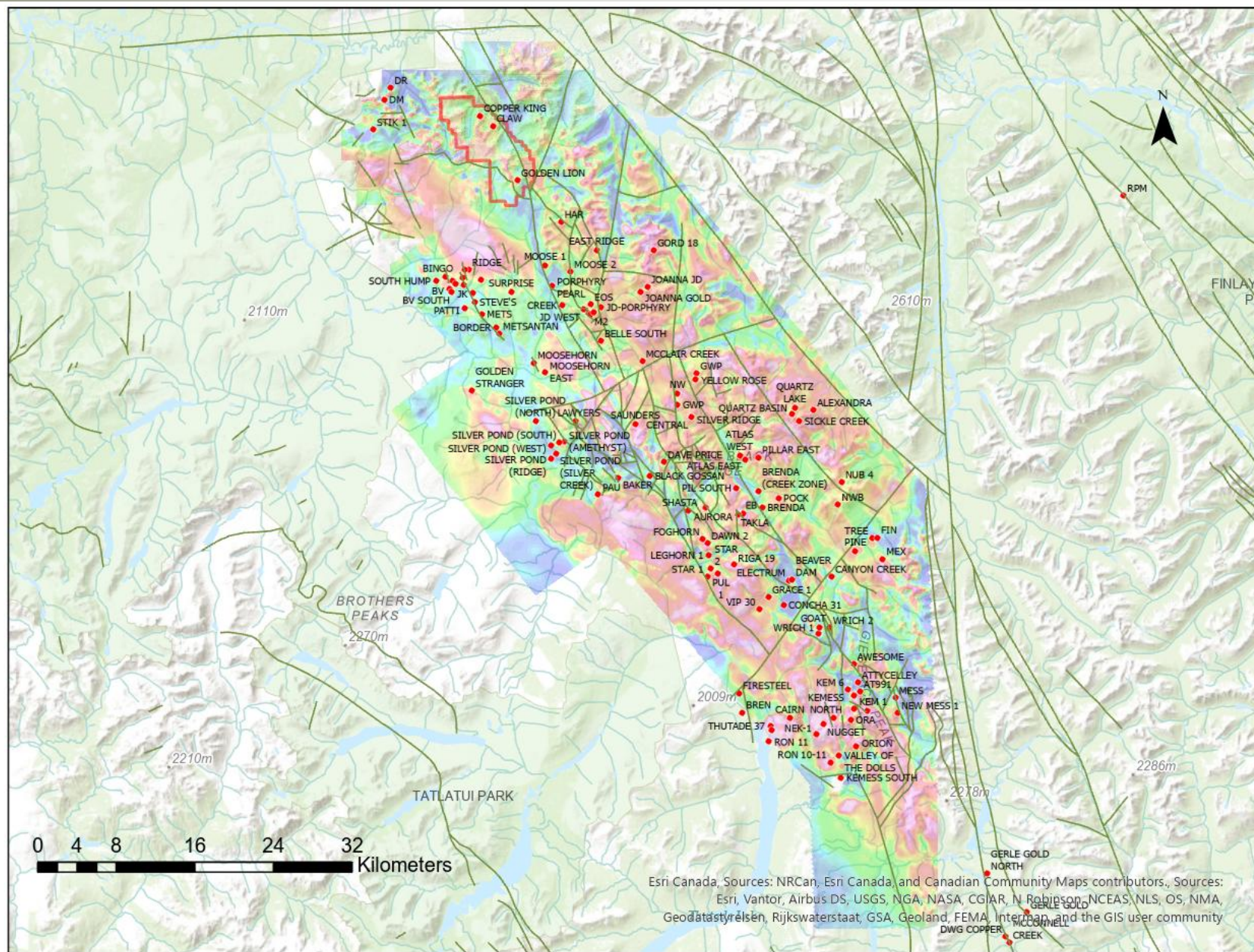


*Resource estimates taken from company websites. Market cap is approx. April 2026 valuation

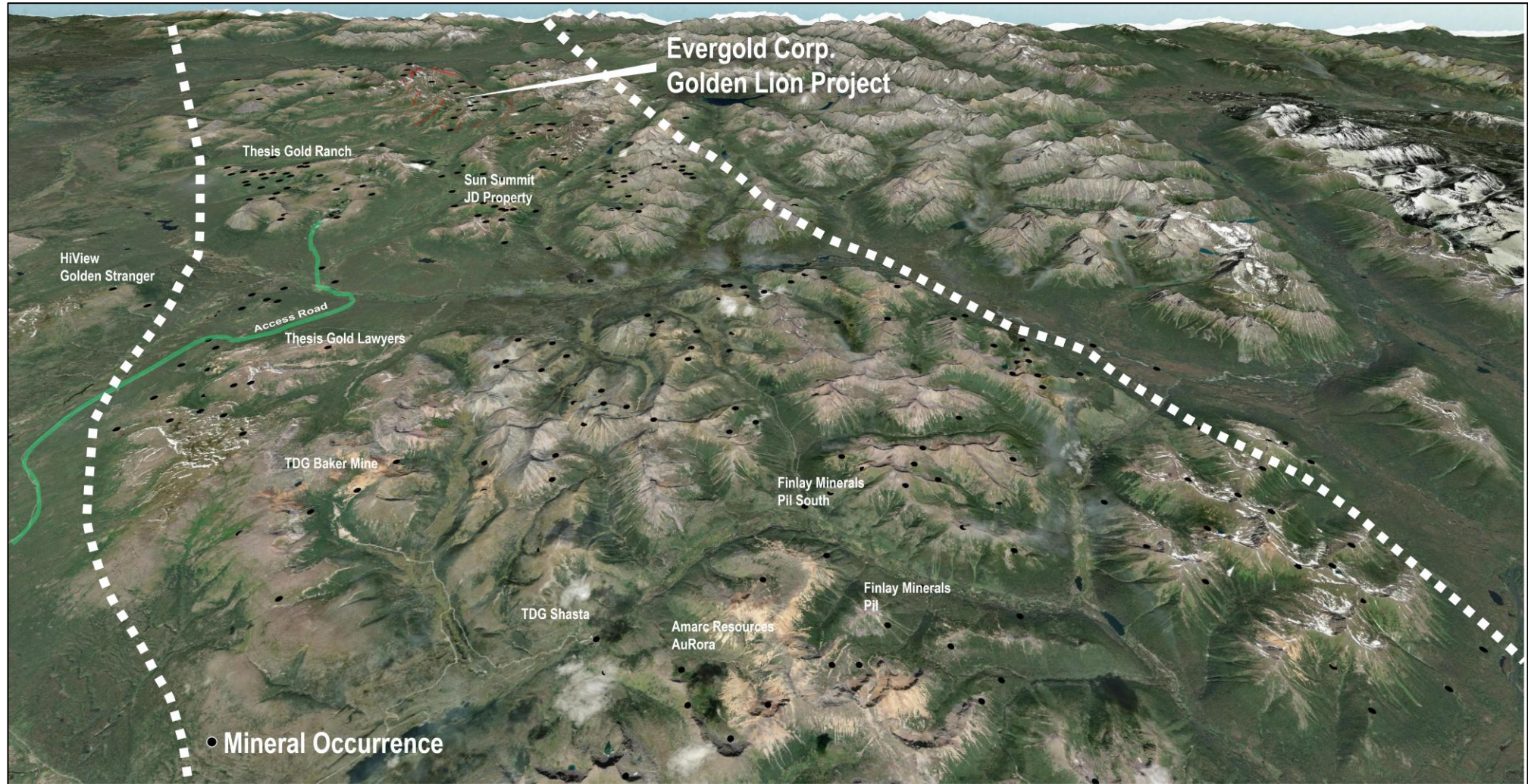
Toodoggone Regional Geology



Toodoggone Regional Airborne TMI (nT)

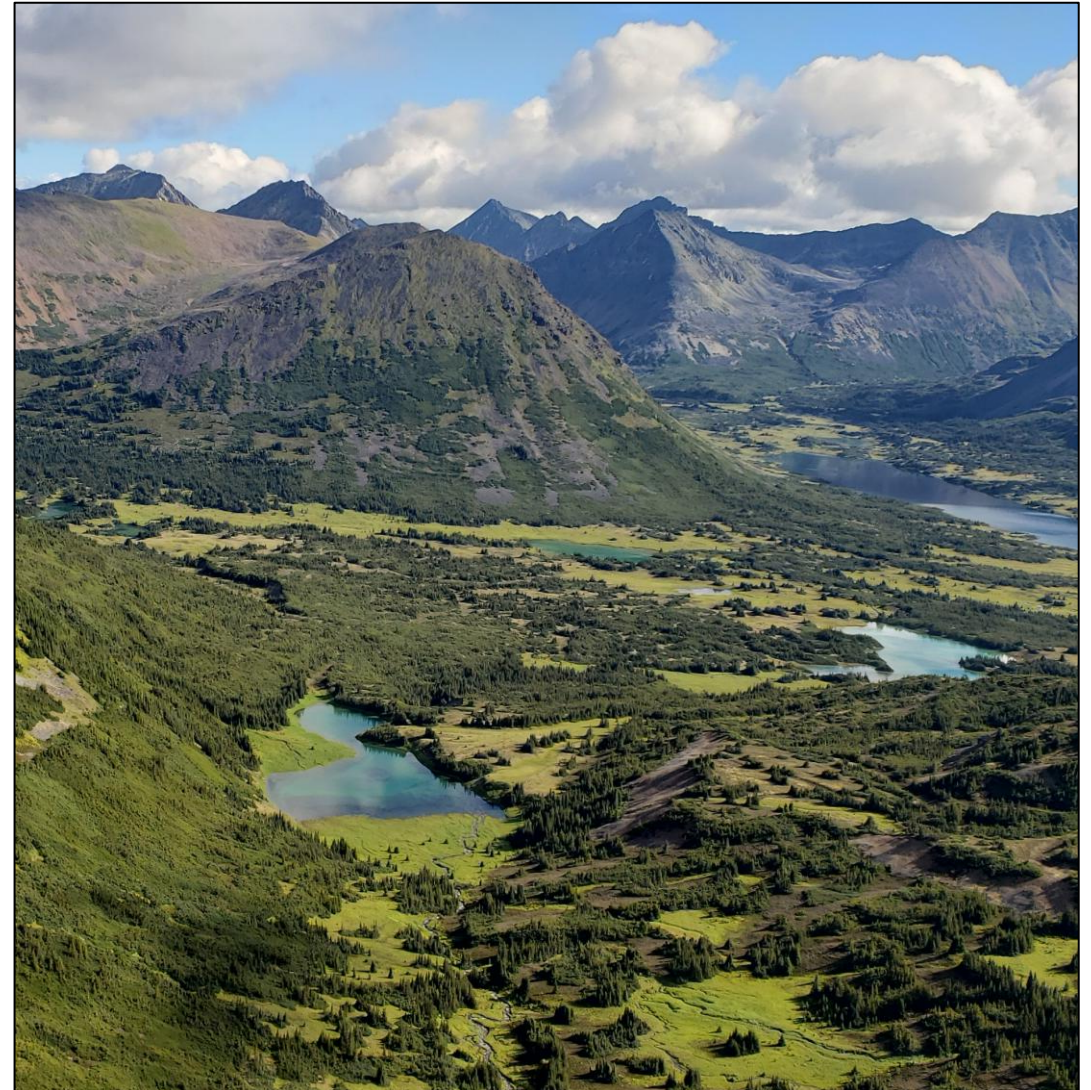


Toodoggone



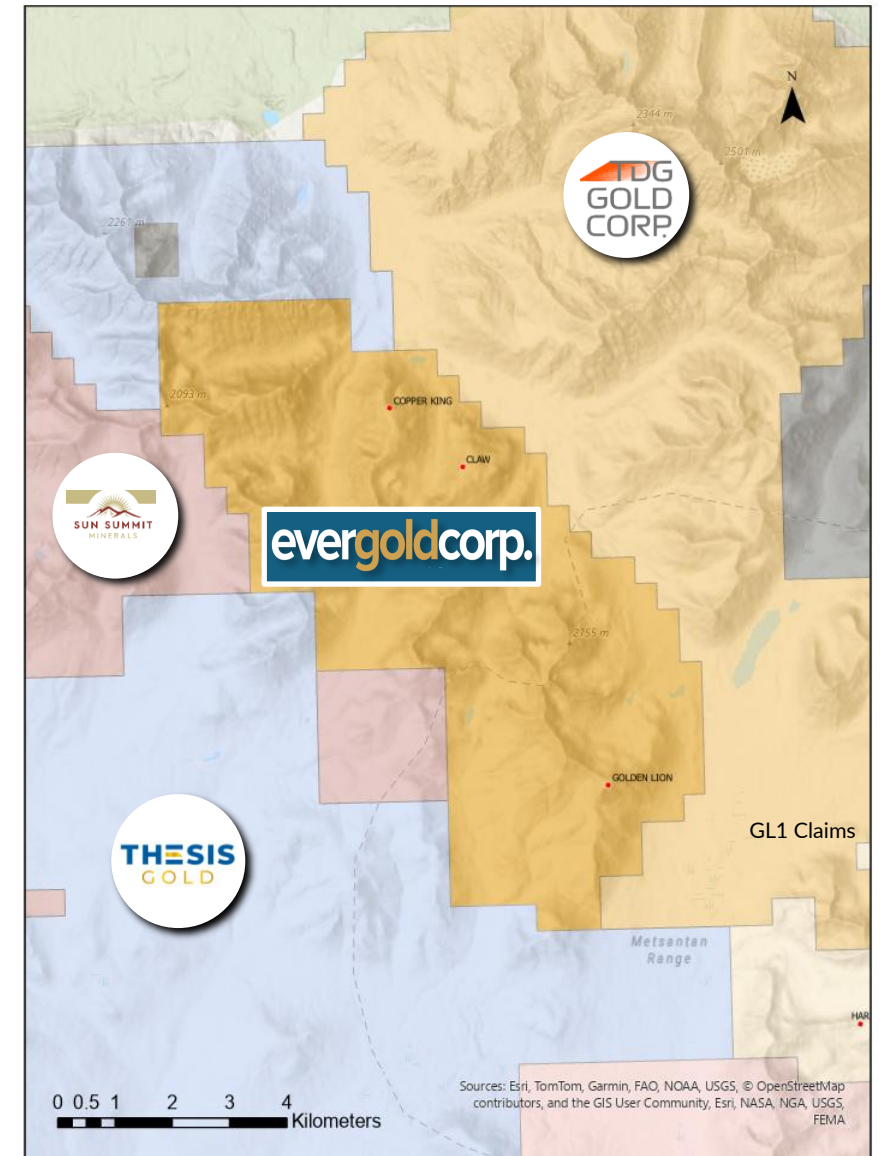
Golden Lion Project

- 100%-owned **Golden Lion Project**, located in in one of British Columbia's most active and prospective districts
- Adjacent to Thesis Gold-Ranch and TDG Gold -Bot Properties
- Permitted Drill-ready gold-silver prospect
- Porphyry Copper Potential



Golden Lion Project

- Golden Lion totals +5,000ha
- Worked by Newmont in the early 1980s, first staked by C.J. Greig in 2007 and held ever since
- The property lies just 9 kms up a broad valley from Thesis Gold's Lawyers-Ranch project

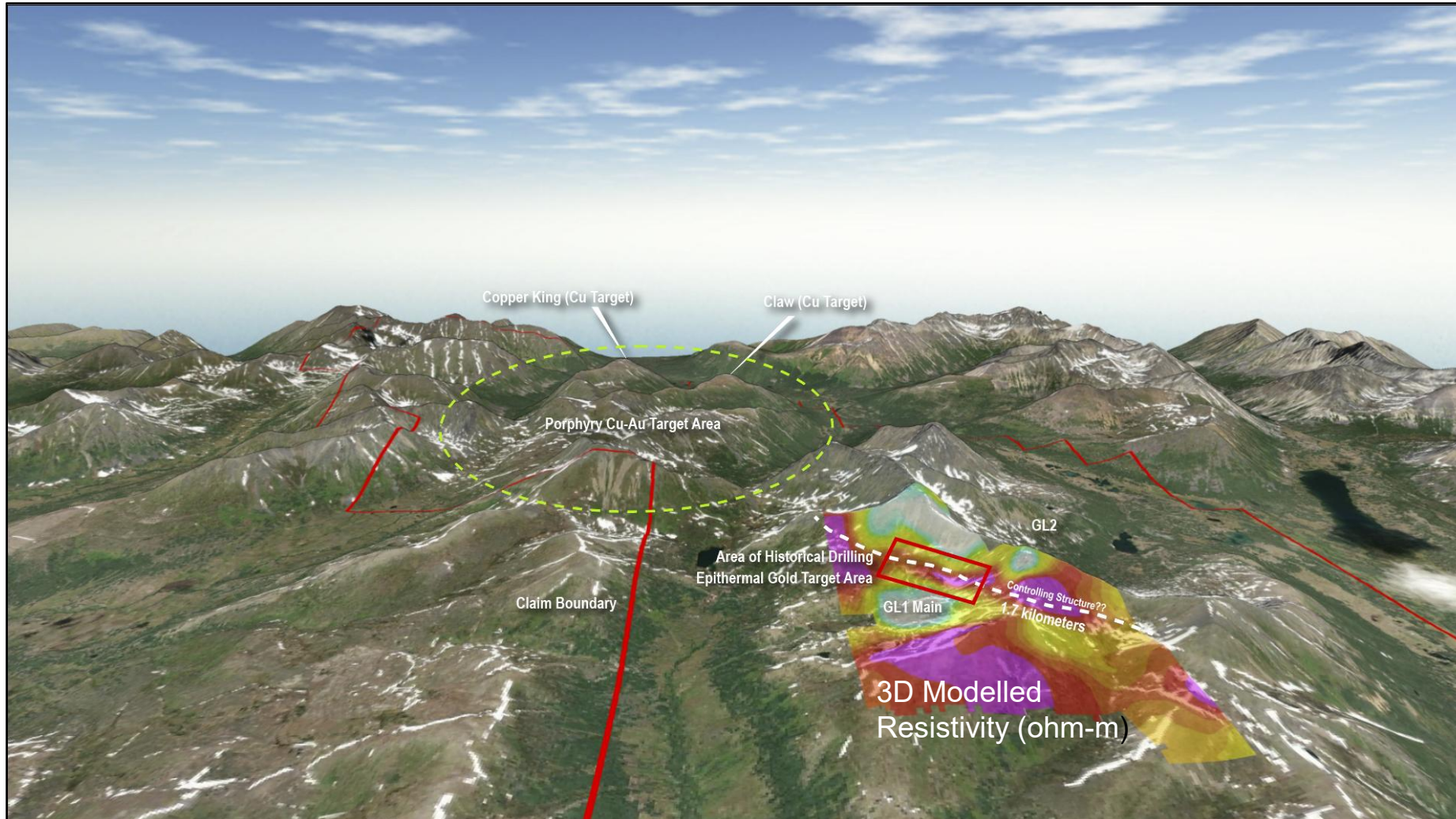


Historical Work

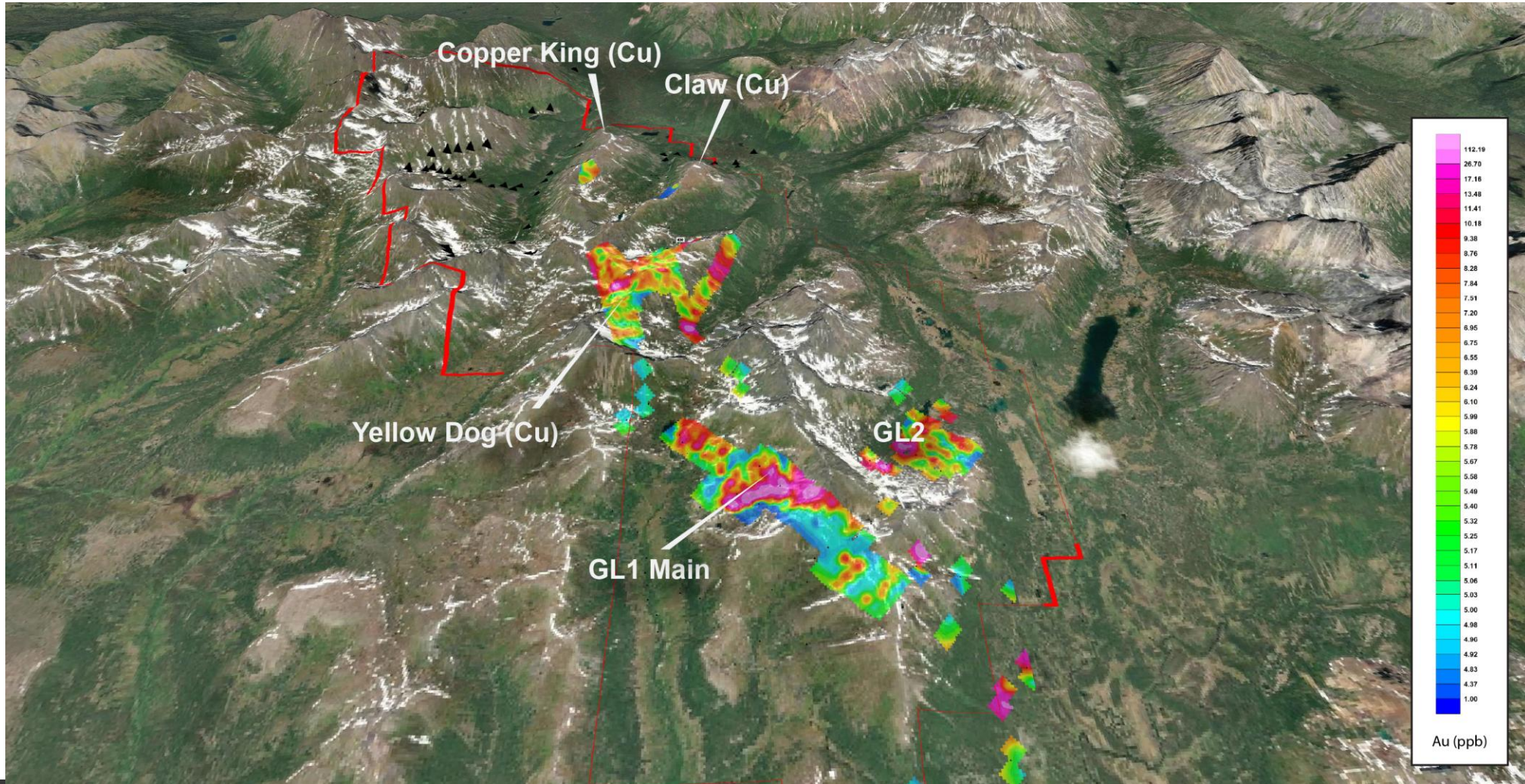
- Mapping, Rock-Soil-Silt Sampling, Geophysics (magnetics, VLF, induced polarization)
- Drilling for a total of 5,900 metres was conducted by Newmont in 1984 and Evergold in 2020 /2021
- Drilling established a shallow, continuously mineralized low-grade envelope, with higher-grade intercepts, over 400 metres of strike as defined to date
- Rock-Soil-Silt Sampling and Drilling for Copper in Northern Part of the Property



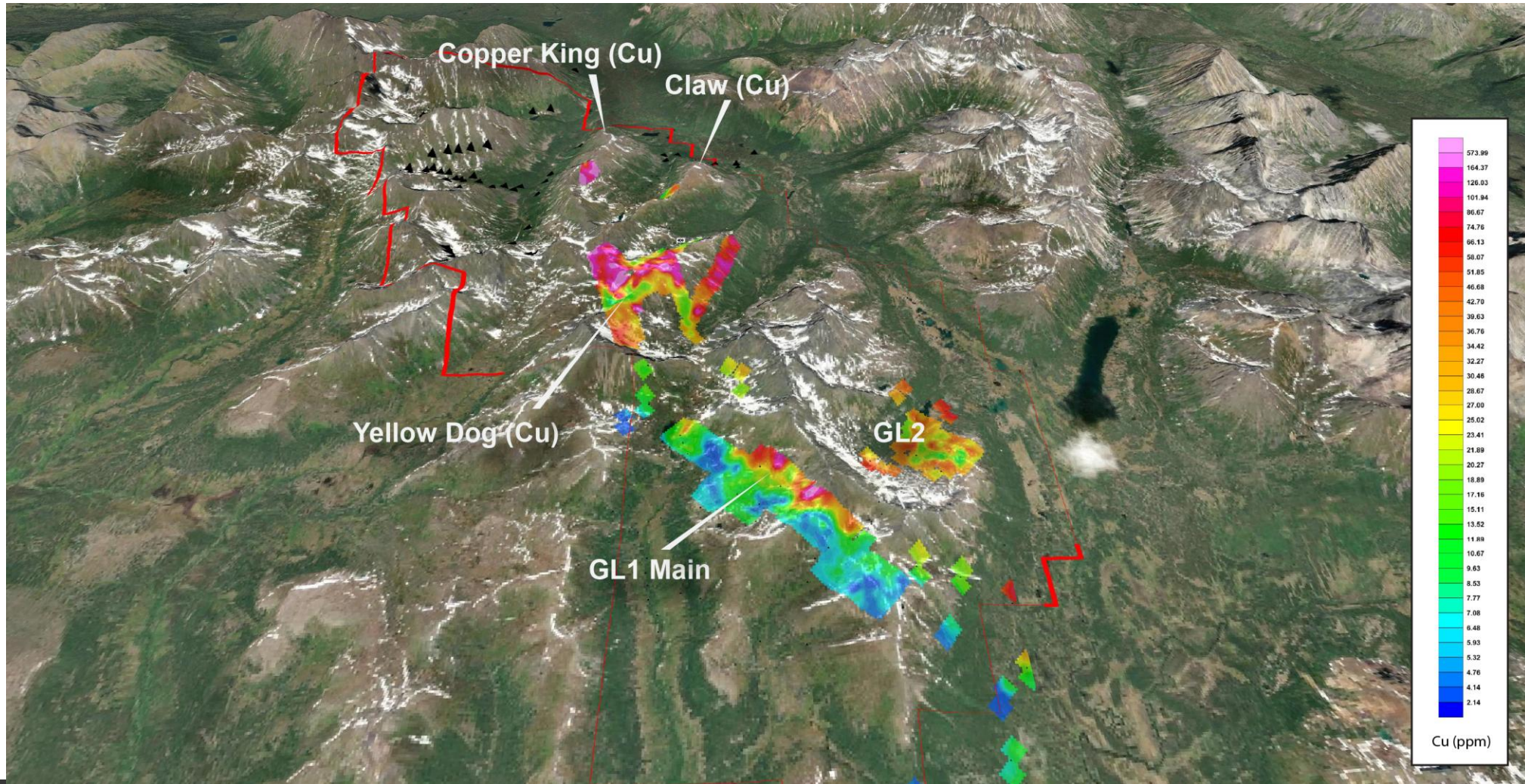
Target Areas – Golden Lion Property



Target Areas – Gold Soil Geochem (ppb)



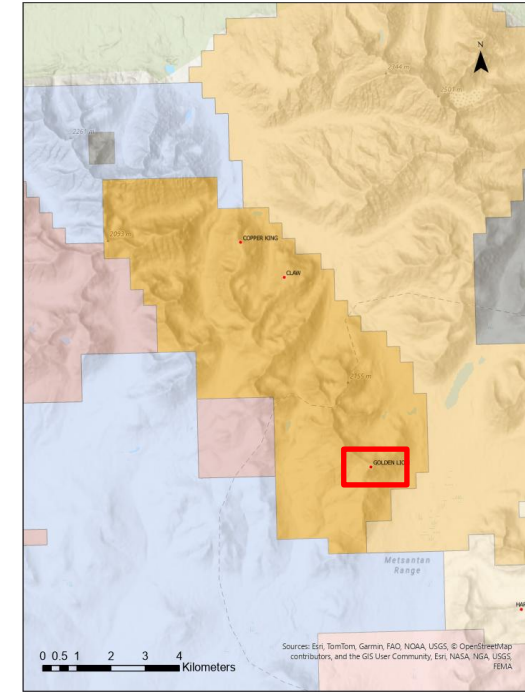
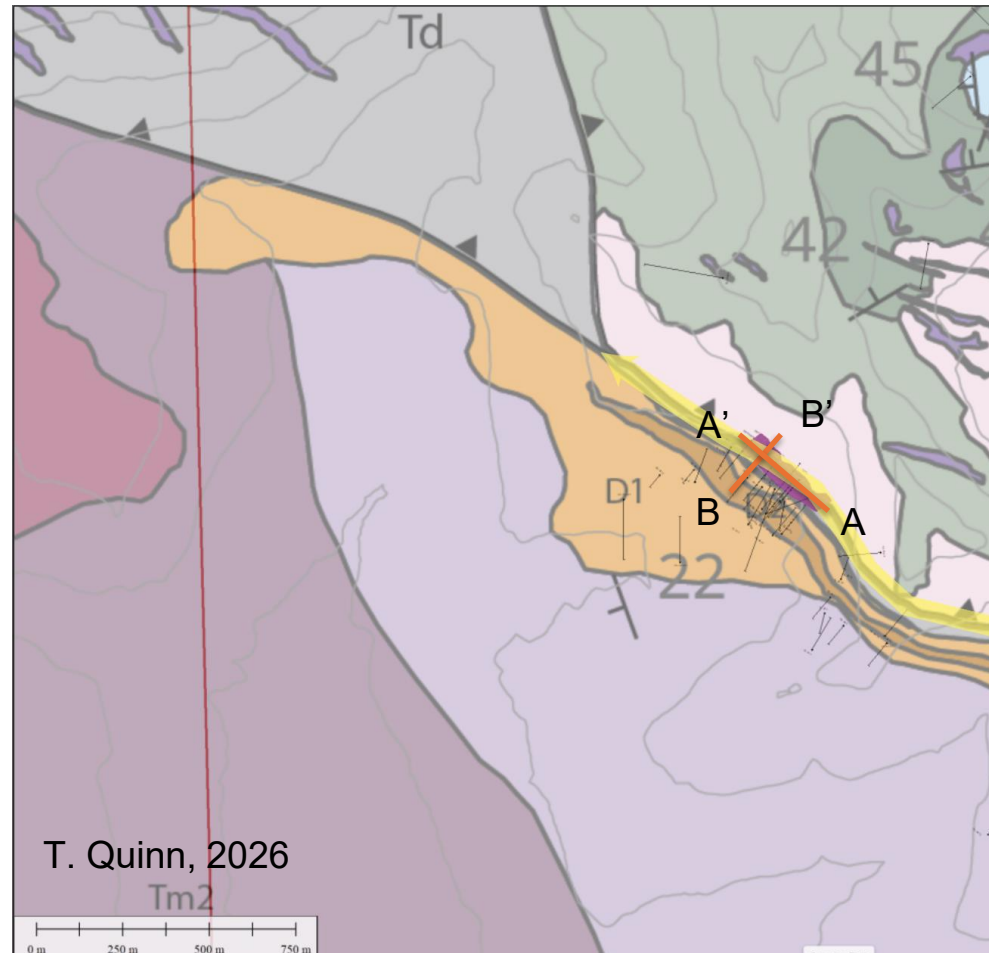
Target Areas – Copper Soil Geochem (ppm)



GL1 Zone


1.8 KM OF STRIKE LENGTH

- Shallow, precious metals-rich zones at GL1 Main remain open both along strike and down dip
- Soil/Rock sampling by Newmont and Evergold returned high gold and silver values along ~1.8 km of strike, much of which is untested by drilling
- Much of the favorable geological contact remains untested



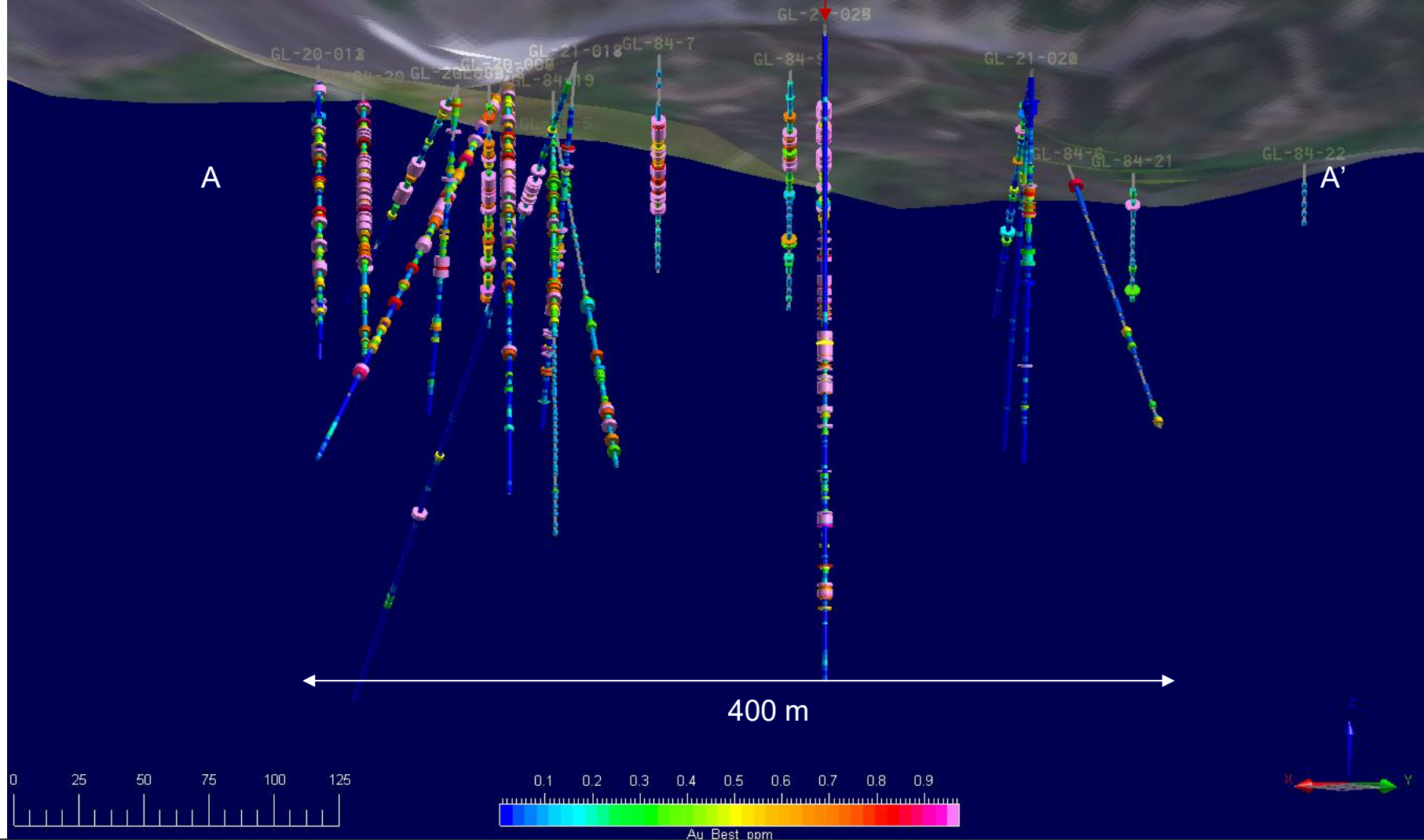
INTRUSIVE ROCKS	
EARLY JURASSIC (?)	
DIKES AND/OR SILLS	
D3	Porphyritic latite; dark mauve to purple; fine-grained; plagioclase-hornblende-pyroxene phytic
D2	Porphyritic latite; 2-5 mm plagioclase laths (20 vol.%), up to 4 mm long hornblende (<10 vol.%), pyroxene (<10 vol.%), high-K fine-grained groundmass
D1	Porphyritic latite dike or sill; 1-3 mm plagioclase laths,
EJm	Monzonite stock and dikes; diagnostic "blocky" plagioclase phenocrysts
BLACK LAKE INTRUSIVE SUITE	
BLmg	Monzogranite; orange to pink; medium-grained; equigranular
LATE TRIASSIC	
LTgd	Biotite hornblende granodiorite; light pink; medium-grained; equigranular

Historical Drilling GL1 Looking SW

 $\geq 1 \text{ g/t Au}$




Last Drilling Section of 2021



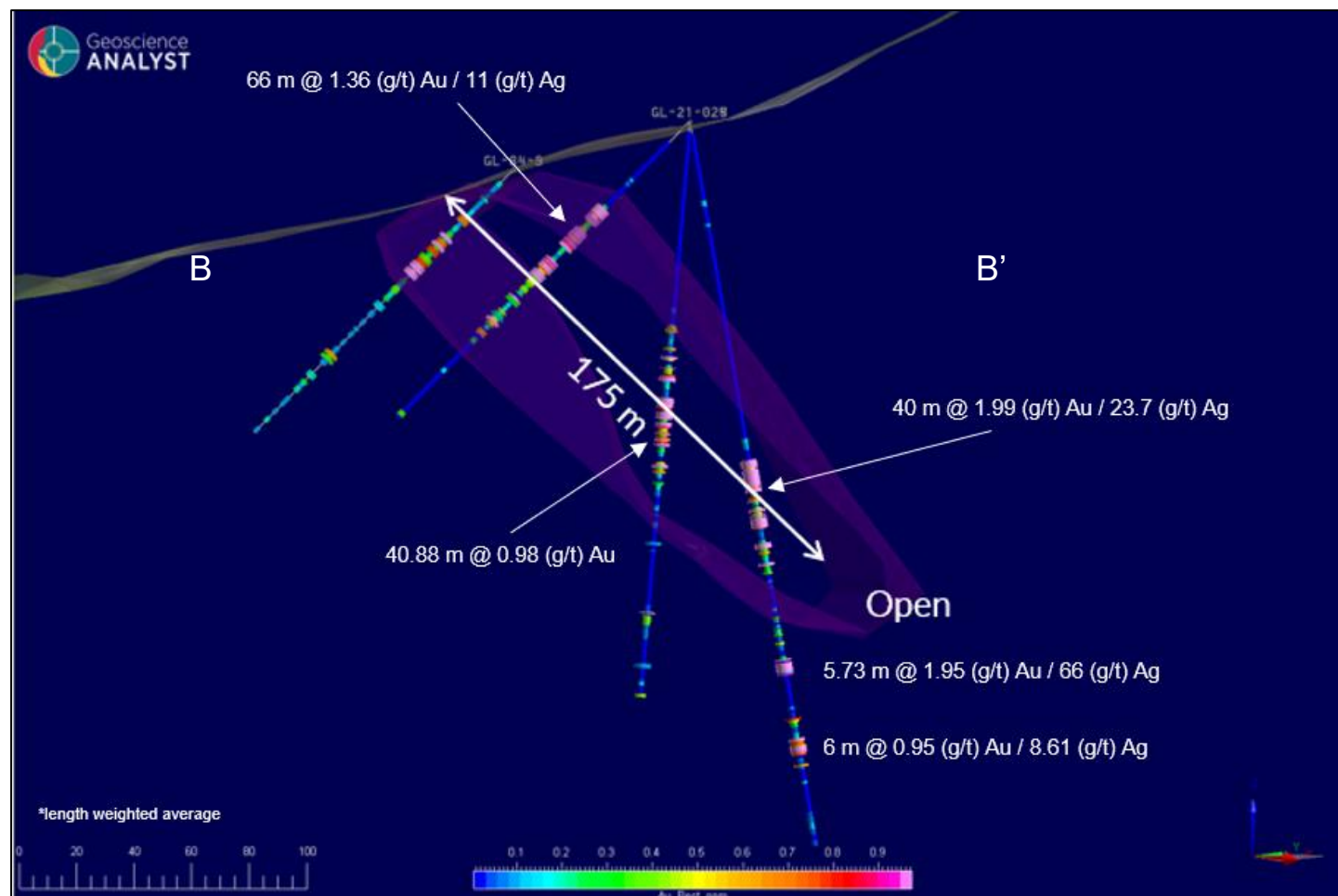
Historical Drilling

Looking NW

- Drill Section from 2021 drilling which show coherent NE dipping zone

 ≥ 1 g/t Au

SELECT DRILLING HIGHLIGHTS			
DRILL HOLE	INTERVAL (m)	GOLD (G/T)	SILVER (G/T)
GL21-24	66.0	1.36	11.0
Incl.	3.3	11.3	12.0
GL21-25	11.3	5.4	62.0
Incl.	1.0	26.1	619.0



Historical Drilling

Lithology

- Mineralization hosted in D-Series Intrusions in GL1 Zone
- Mineralization and alteration is structurally controlled by second-order faults splaying off main Claw Mountain Fault

INTRUSIVE ROCKS EARLY JURASSIC (?)

DIKES AND/OR SILLS

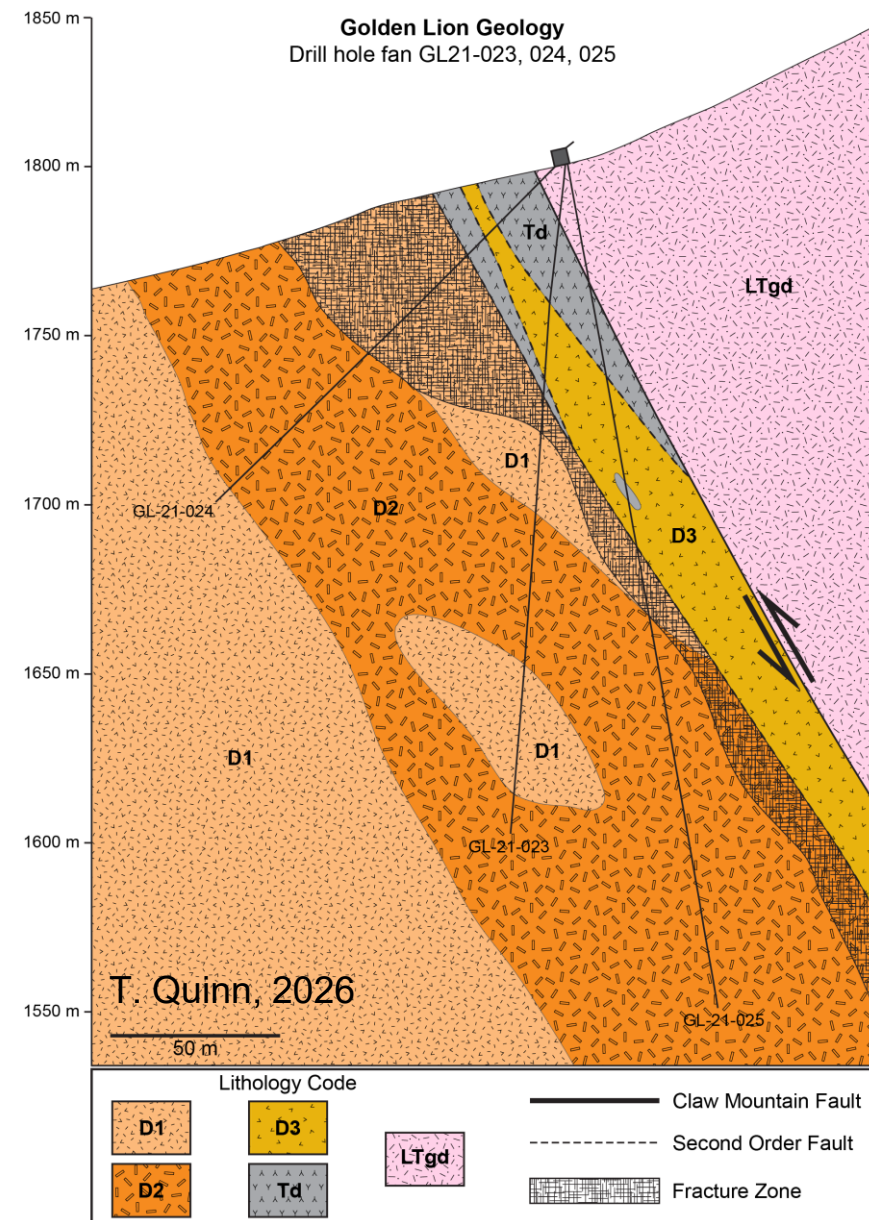
- D3** Porphyritic latite; dark mauve to purple; fine-grained; plagioclase-hornblende-pyroxene phyric
- D2** Porphyritic latite; 2-5 mm plagioclase laths (20 vol.%), up to 4 mm long hornblende (<10 vol.%), pyroxene (<10 vol.%); high-K fine-grained groundmass
- D1** Porphyritic latite dike or sill; 1-3 mm plagioclase laths,
- EJm** Monzonite stock and dikes; diagnostic "blocky" plagioclase phenocrysts

BLACK LAKE INTRUSIVE SUITE

- BLmg** Monzogranite; orange to pink; medium-grained; equigranular

LATE TRIASSIC

- LTgd** Biotite hornblende granodiorite; light pink; medium-grained; equigranular



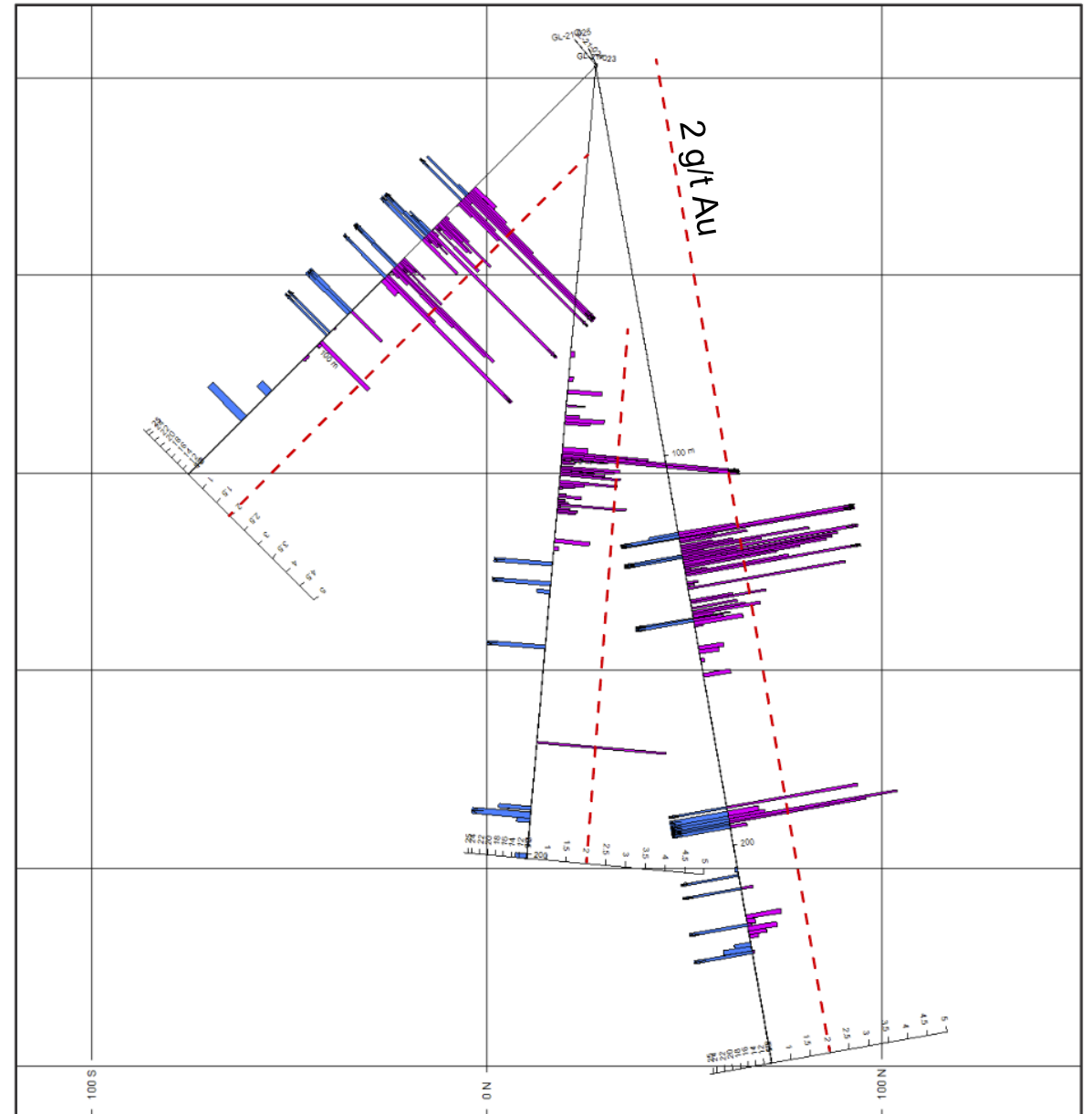
Historical Drilling

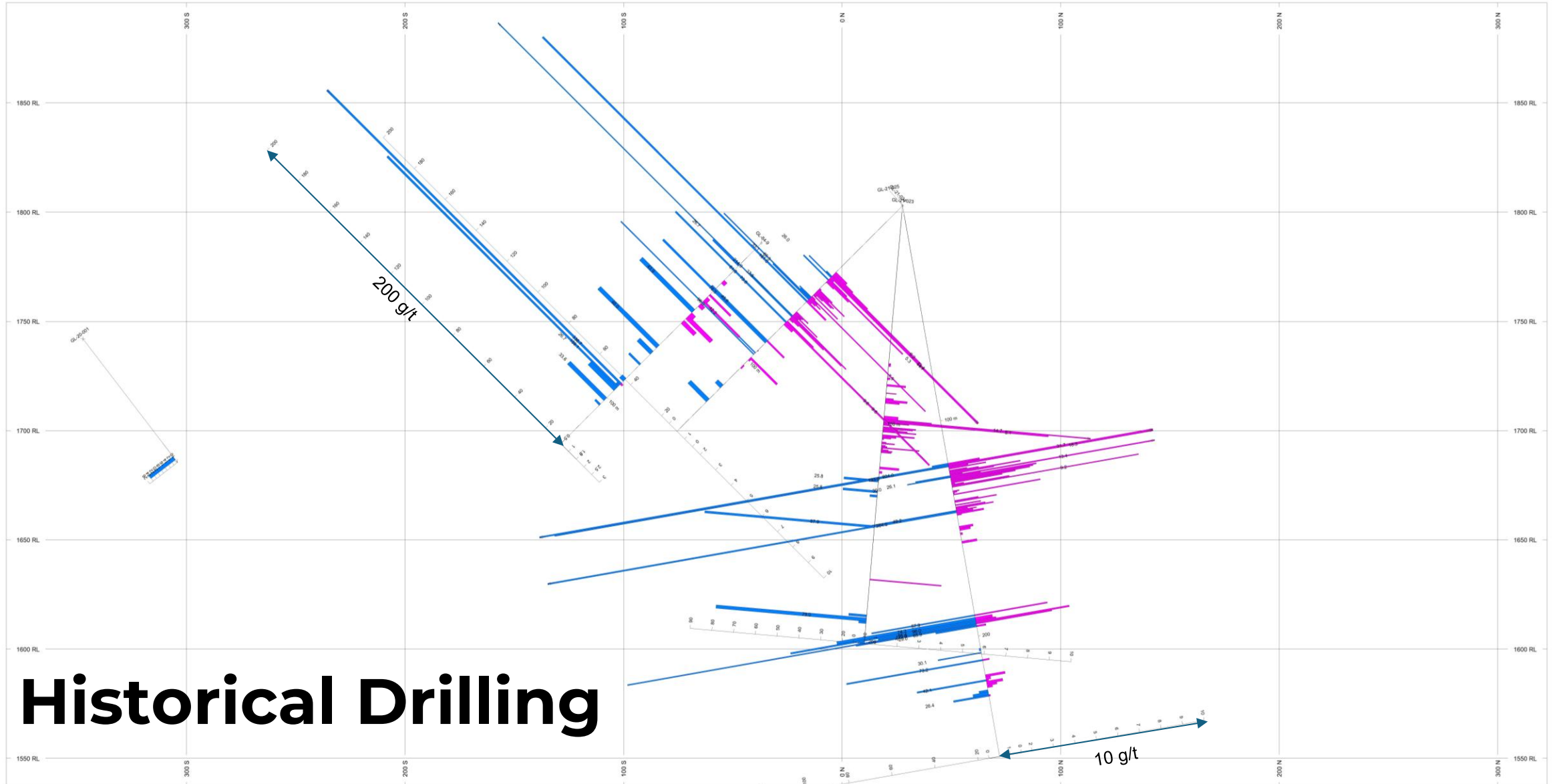
DRILLING HIGHLIGHTS

- Multiple High-grade Gold/Silver Intervals with low grade support.



Hole GL-21-25 120-140m





Historical Drilling

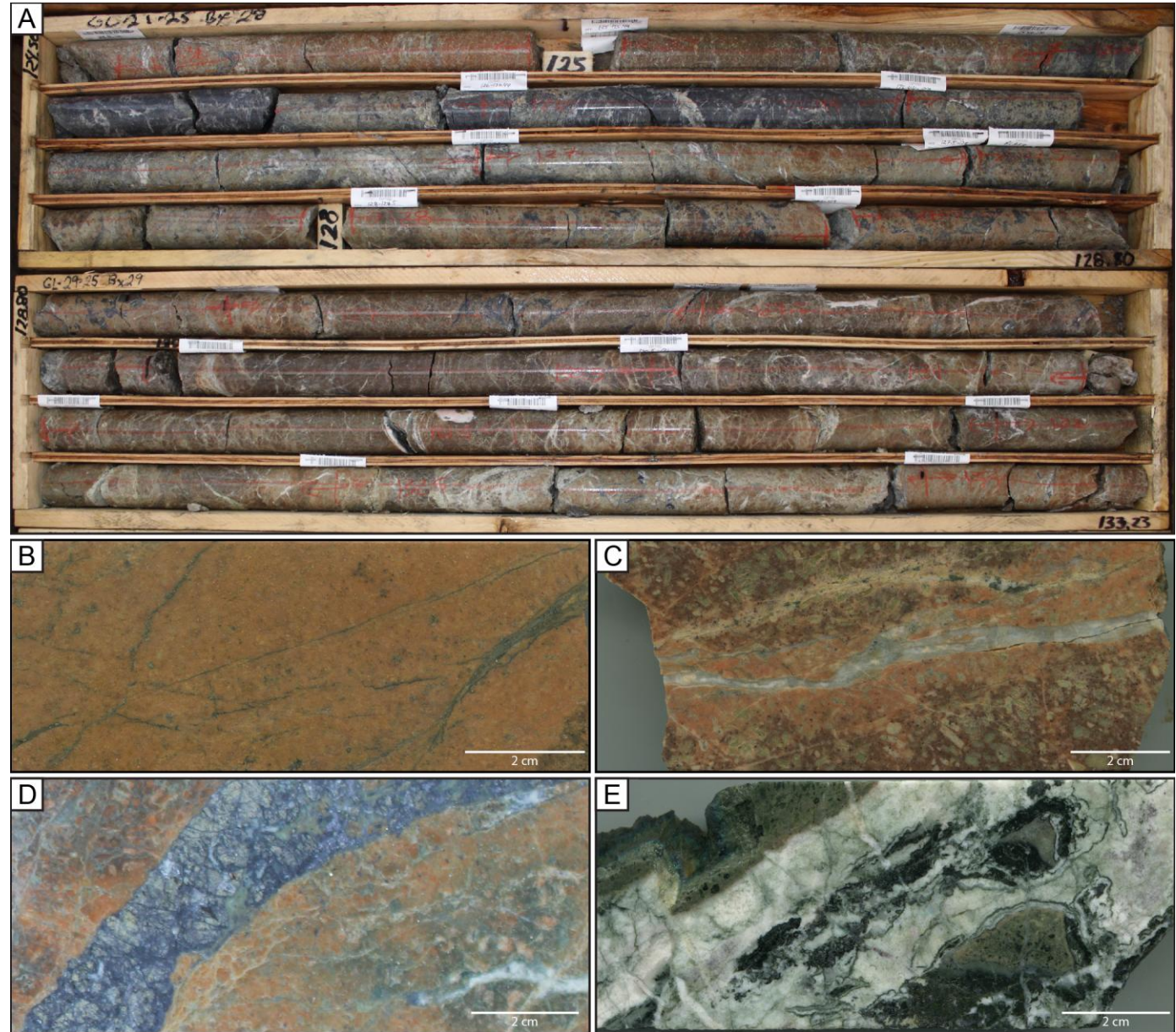
Historical Drilling

DRILLING HIGHLIGHTS

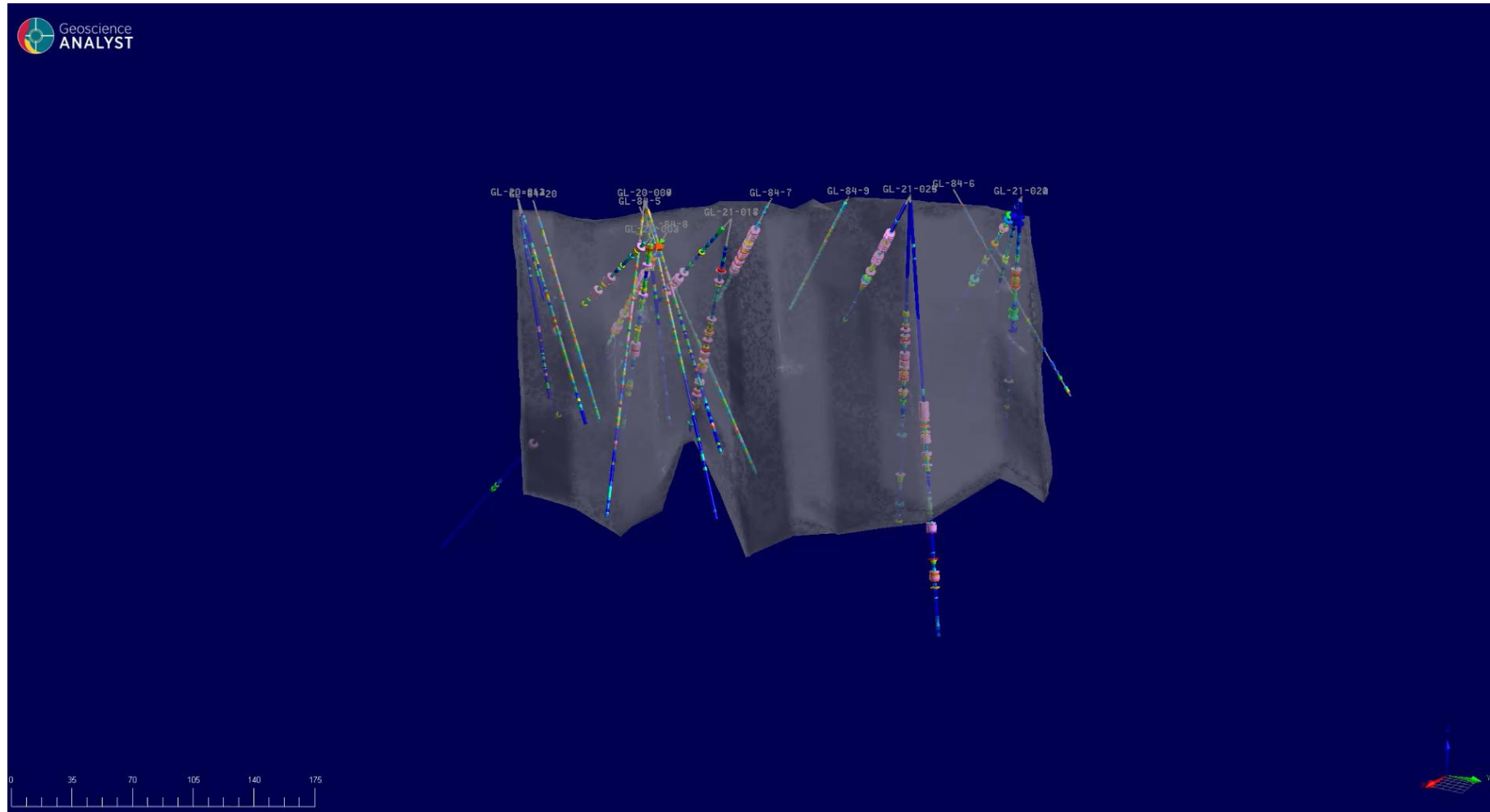
- Multiple High-grade Gold/Silver Intervals with low grade support.



Hole GL-21-25 120-140m



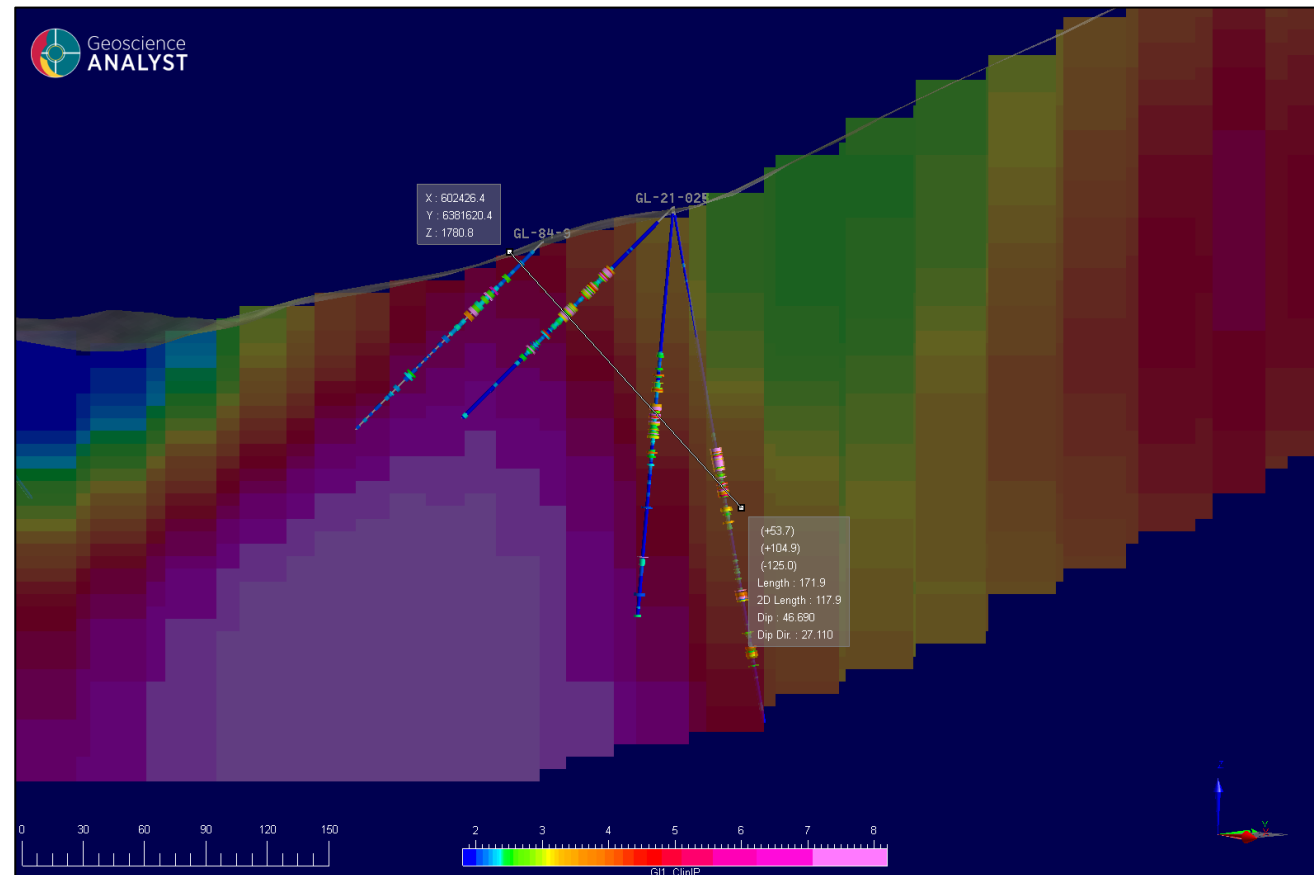
GL1 Historical Drilling – 3D View



Geophysics

3D MODELLLED CHARGEABILITY (mV/V)

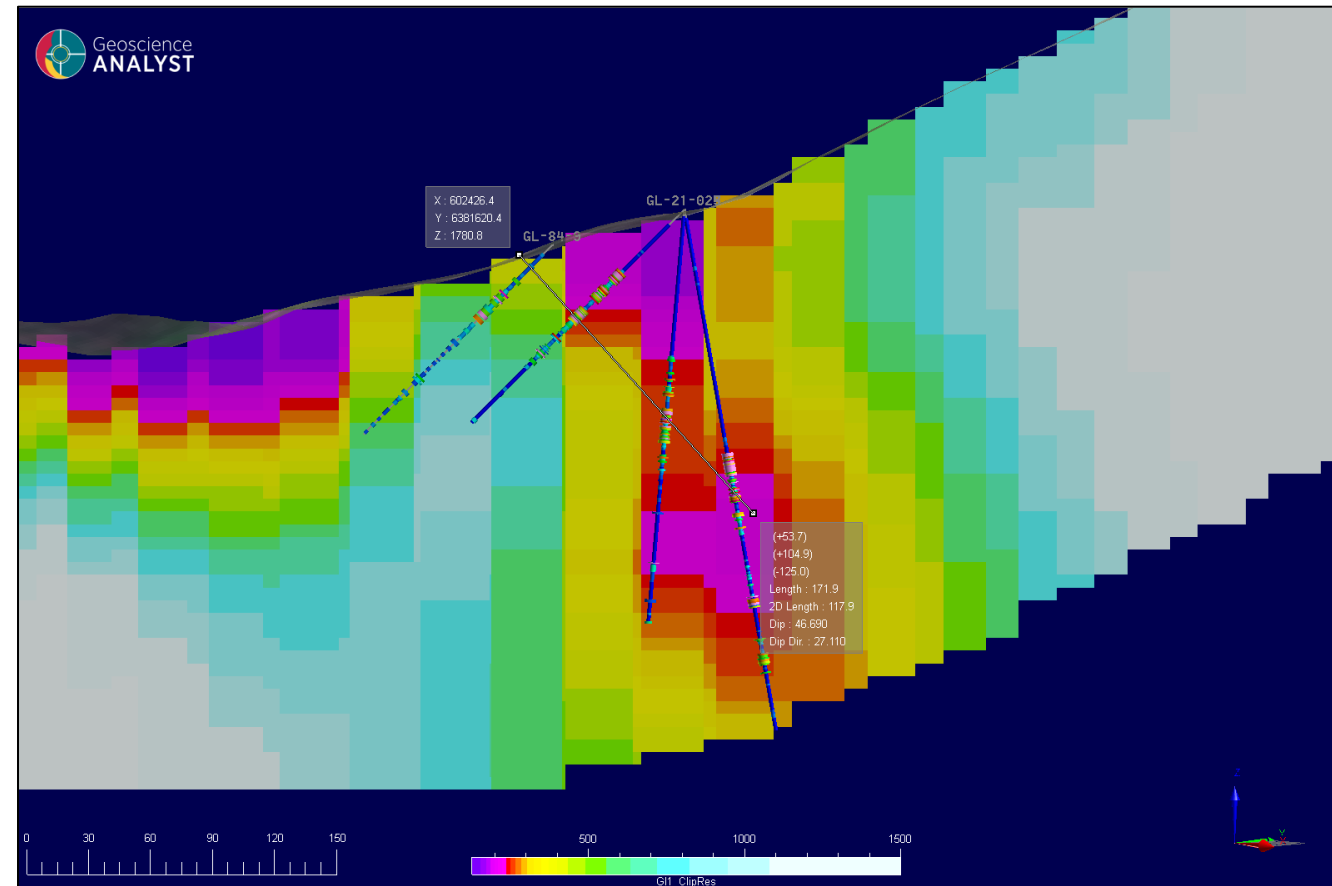
- Mineralization traced some 175 m down dip with drilling and remains open.
- Mineralized zone lies in the shoulder of larger chargeability feature.



Geophysics

3D MODELLLED RESISTIVITY (ohm-m)

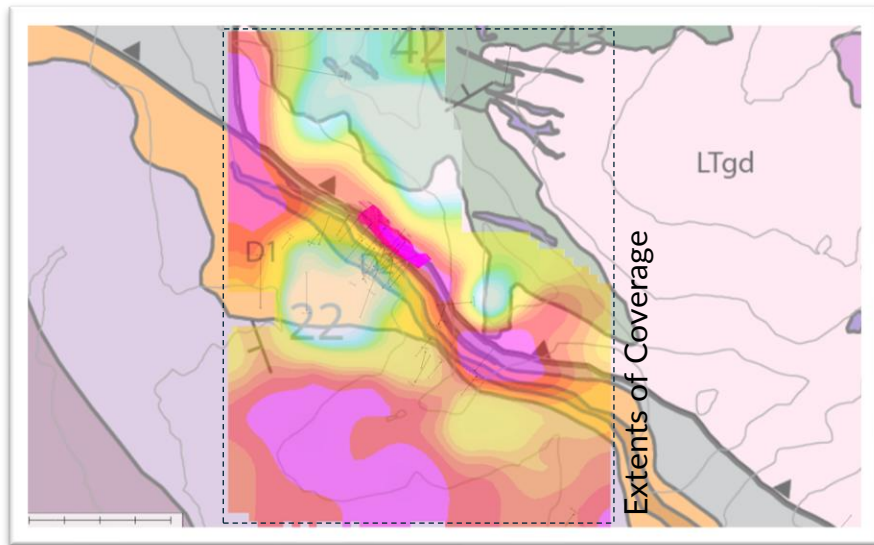
- Marked decrease in resistivity, proximal to mineralization. Sub-vertical Resistivity feature can be tracked for over 1 kilometer.



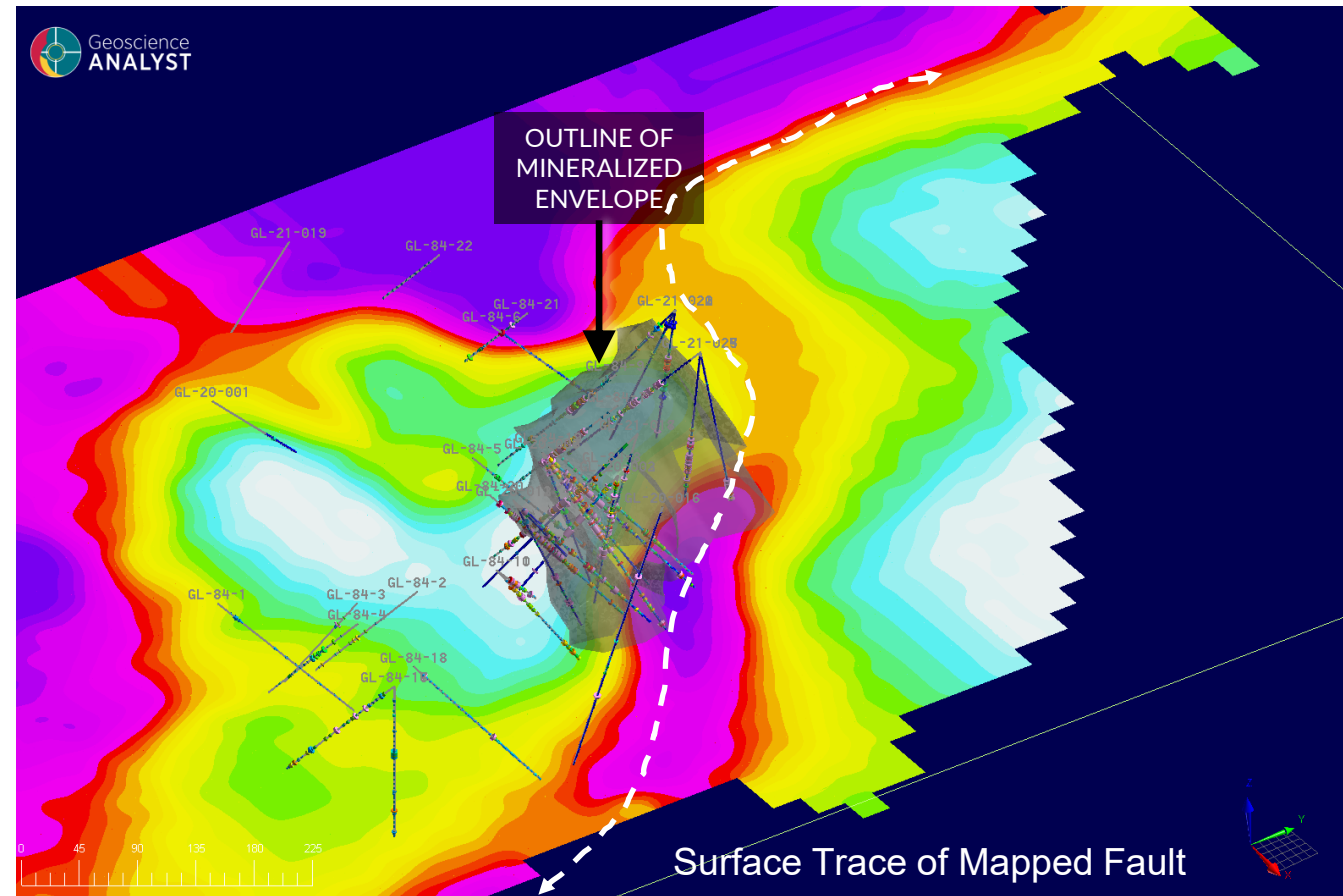
Geophysics

3D MODELLLED RESISTIVITY (ohm-m)

- Vertical Slice of 3D Modelled Resistivity suggests historical drilling maybe also be to far to the southwest.



Modelled Resistivity On Geology



Golden Lion's Copper Potential

Porphyry Copper Potential

- Golden Lion property is located along a trend with a proven copper porphyry district.
- The district includes exploration and development successes at Kemess (Centerra) and Aurora-Aurora West (Amarc Resource, TDG Gold)
- Evergold's preliminary sampling and sparse backpack and diamond drilling returned local narrow but high-grade copper results with gold and silver credits at several sites immediately north and northeast of GL1 Main

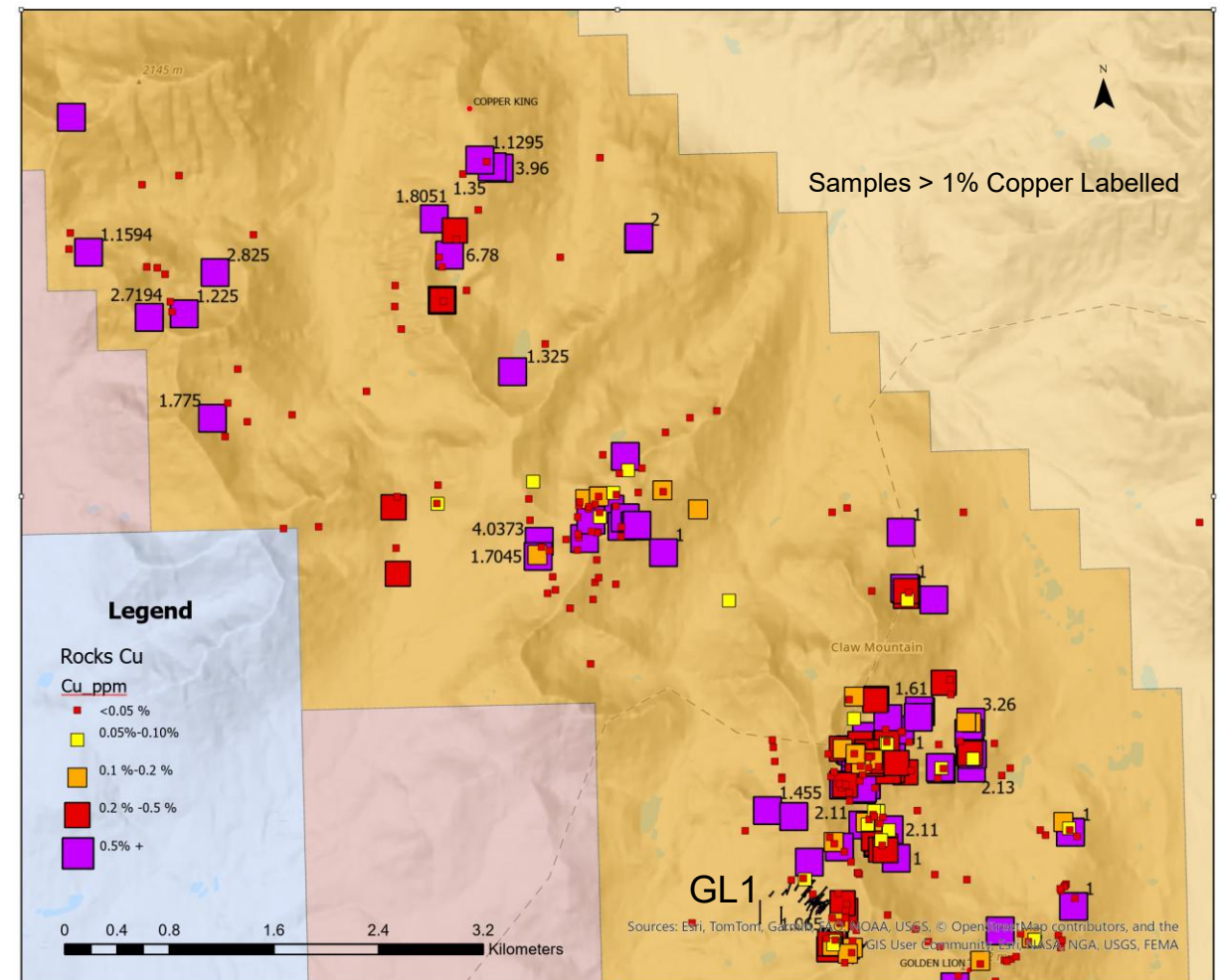


Golden Lion's Copper Potential

- Historical High Copper Samples Through the property
- The district includes exploration and development successes at Kemess (Centerra) and Aurora-Aurora West (Amarc Resource, TDG Gold)

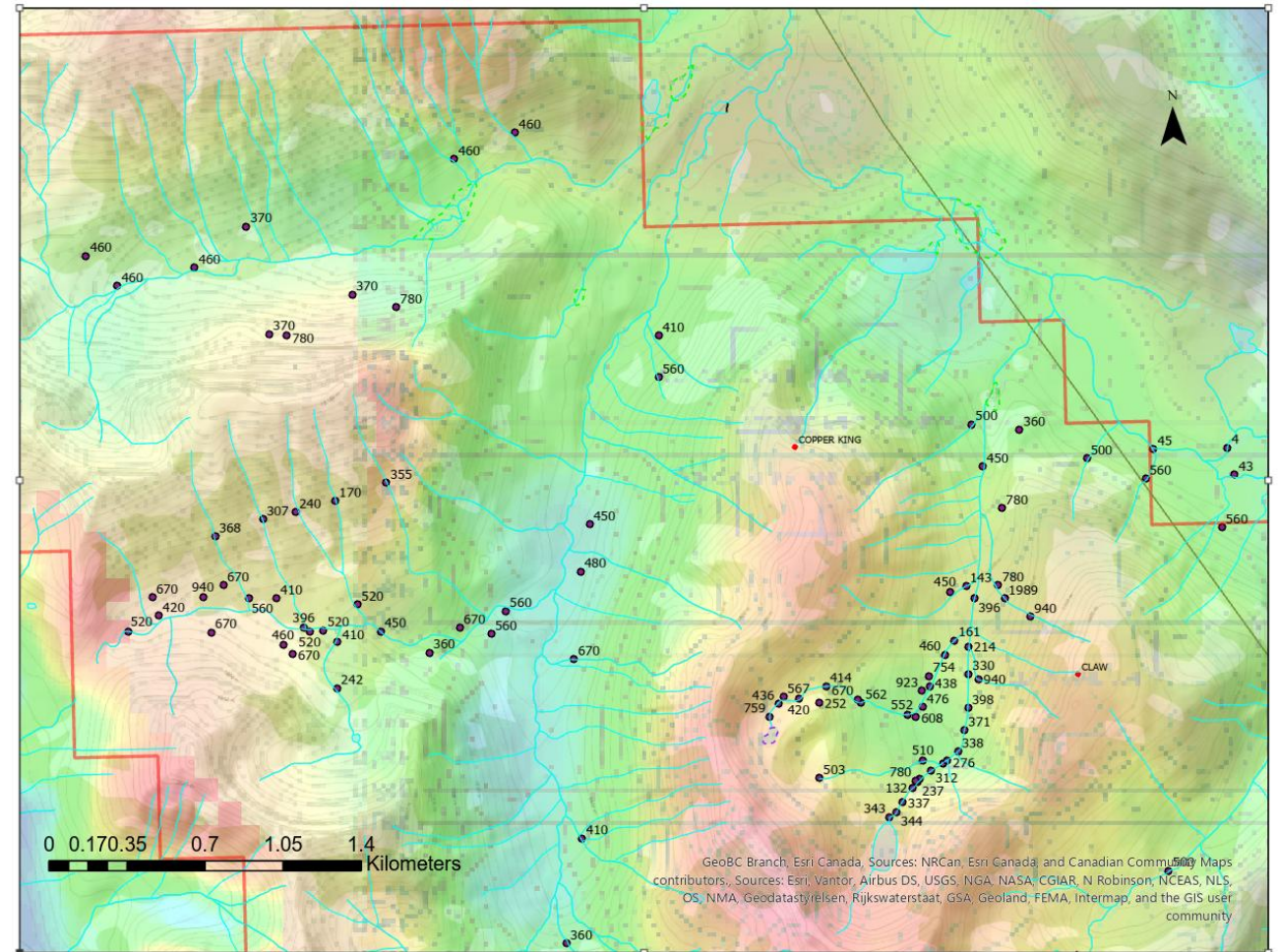
From	To	Core	Sample
496	504	Brown porphyritic andesite, amygdales with calcite.	
504	505	Epidote-calcite rock, quartz.	
505	508	Brown fragmental andesite (flow top).	
508	510.5	Grey porphyritic andesite, spec of native copper at 509.	native copper
510.5	511	Brown fragmental andesite (flow top).	
511	515	Grey porphyritic andesite, a few specs of native copper.	native copper
515	515.5	Brown fragmental andesite (flow top).	
515.5	518	Grey porphyritic andesite.	
518	519.5	Brown fragmental andesite, stringers of epidote.	
519.5	528	Brown fragmental andesite (flow top).	
528	528.5	Epidote-calcite rock, chrysocolla and native copper.	native copper
528.5	539	Grey porphyritic andesite, a few specs of native copper.	chrysocolla
539	541	Grey and brown fragmental andesite, a few specs of native copper in white amygdale.	native copper
541	550.5	Fragmental porphyritic andesite. A few specs of native copper in amygdales (flow top).	native copper
550.5	558	Porphyritic andesite, a few specs of native copper.	native copper
558	559	Epidote-calcite rock, abundant specs of native copper, chrysocolla.	(native copper) (chrysocolla)
559	573	Grey porphyritic andesite, a few specs of native copper.	native copper
573	574	Epidote-calcite rock, a few specs of native copper.	native copper
574	578	Grey porphyritic andesite.	
578	590	Grey porphyritic andesite, rare specs of native copper.	native copper
590	592.5	Grey and reddish brown fragmental andesite.	
592.5	602.5	Grey porphyritic andesite, rare specs native copper.	native copper

Partial Drill Log from ARIS Report 5635



Golden Lion's Copper Potential

- Compiled historical copper silt samples (ppm)
- Highly anomalous values over a broad area



2026 Exploration Plan

Drilling and Property Wide Exploration

- Detailed Drone Magnetics and Lidar Main Zone
- Drill Testing GL1 Main Zone - 4,000 m
- Property Wide Airborne Magnetics/Airborne Passive EM (ZTEM/MobileMT) Survey
- Property Scale Mapping and Sampling in the Northern Part of the property
- Induced Polarization surveying of historical drilling at Claw occurrence (permit pending)

Renewed Leadership

EVERGOLD'S TECHNICAL TEAM HAS EXTENSIVE EXPERIENCE IN THE TOODOGGONE

Alex Walcott, P. Geo.

PRESIDENT, CEO & DIRECTOR

Alex Walcott has over 25 years of experience in mineral exploration. Through his leadership at Peter E. Walcott & Associates Limited, he conducted geophysical surveys integral to successes at GT Gold's Saddle discoveries, along with numerous other discoveries in BC. Alongside Charlie Greig, he has also greatly advanced Metal Energy's NIV property.

Charles J Greig, P. Geo

EXECUTIVE CHAIRMAN

Currently Principal of CJ Greig & Associates and CEO of BC-based Metal Energy, Charlie Greig has over 40 years of exploration experience, including key roles in the discoveries of GT Gold's Saddle North Cu-Au porphyry and Saddle South high-grade gold-silver system. His career includes geological work on producing, past-producing, and advanced-stage projects such as Bisha, La India, Alamo Dorado, and Bruce Jack.

Leon Ho, CPA

CFO

Mr. Ho is a chartered professional accountant working at Cross Davis & Company LLP, a chartered professional accountant firm, providing accounting services to publicly listed entities, primarily in the mining sector. Mr. Ho works directly with mining chief executive officers and directors, assisting with their regulatory and accounting needs.

Monique Hutchins

CORPORATE SECRETARY

BComm from Concordia University and member of the Institute of Chartered Secretaries and Administrators. Ms. Hutchins is Managing Director of DSA Corporate Services, with over 15 years' experience in corporate governance, secretarial services, client relations, and marketing globally.

Alvin Jackson, P. Geo

DIRECTOR

Over 40 years of experience in mineral exploration and development, with direct involvement in advancing two major gold deposits and one porphyry copper deposit that became producers. Alvin is currently a Director at Freegold Ventures and Finlay Minerals along with Vice President of Exploration at Freegold Ventures.

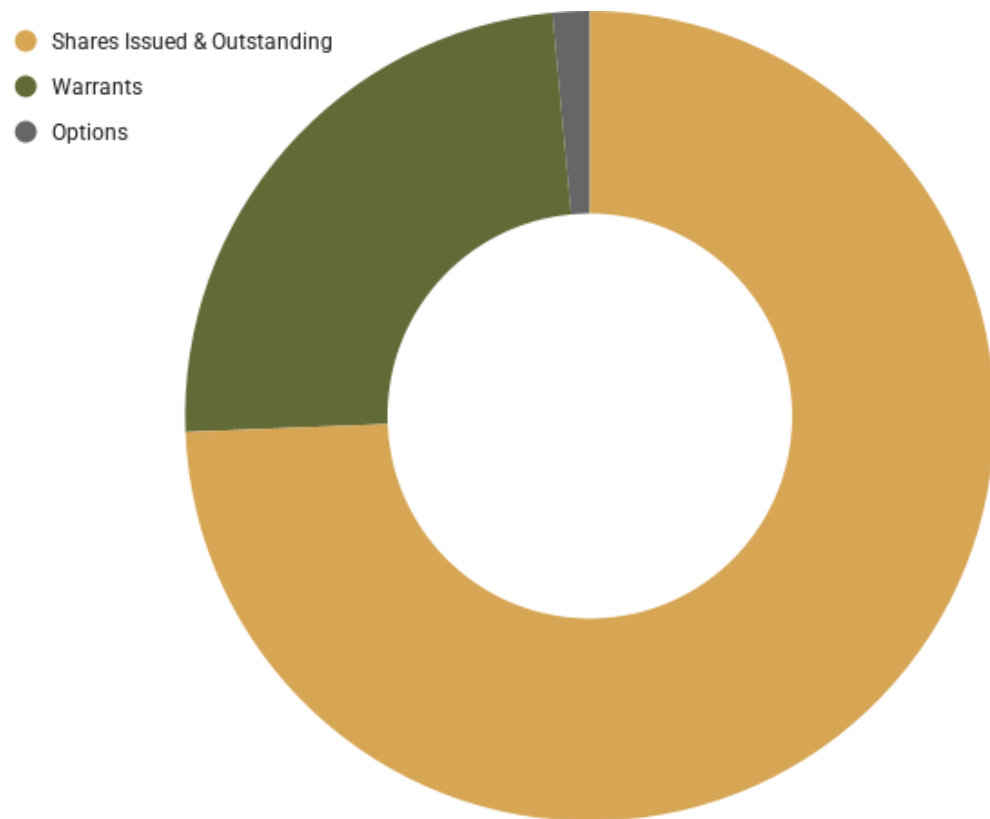
Brian Butterworth

DIRECTOR

Over 40 years of experience in mineral exploration, project development, and capital markets. From 2014 to 2025, he served as President of Hy-Tech Drilling Ltd., where he provided strategic leadership and strengthened the company's market position. His background includes senior roles in mining investment banking, where he led and co-managed equity financings and advised on mergers and acquisitions across the sector.

Market Capitalization

TIGHT SHARE STRUCTURE. LOW MARKET CAP.



Largest Institutional Shareholder



CAPITAL STRUCTURE

Shares I&O:	22,780,052
Warrants:	7,399,216
Options:	452,267
Fully Diluted:	30,822,368
Convertible Debt:	\$350,000**

EXERCISE PRICE	OUTSTANDING	TYPE	EXP. DATE
\$0.80	3,684,613	Warrants	Jul 4, 2028
\$0.60	2,287,033	Warrants	Jun 11, 2026
\$0.30	1,304,348	Warrants	Jan 14, 2028
\$0.45	123,222	Warrants	Jun 11, 2026
\$0.85	395,100	Options	Nov 23, 2028
\$3.00	57,167	Options	Oct 4, 2026

* Stock may not reflect the most recent changes. Please refer to official filings for the latest information.

** Convertible debt by Executive Chairman Charles J Greig, P.Geog

Contact Us

Alex Walcott
PRESIDENT, CEO & DIRECTOR
alex.walcott@evergoldcorp.ca
604.891.6200

Registered Head Office
Evergold Corp.
110 Yonge St., Suite 1601
Toronto, ON M5C 1T4

An aerial photograph of a vast, green, rolling landscape. The terrain is covered in dense vegetation, likely a meadow or field of wildflowers. In the lower right portion of the image, a small figure of a person wearing a backpack is visible, standing and looking out over the expanse. The overall scene is bright and natural, suggesting a remote or wilderness location.

evergoldcorp.