

# Rockland, Nevada

## One of the Best Drill-Ready Projects in the Walker Lane



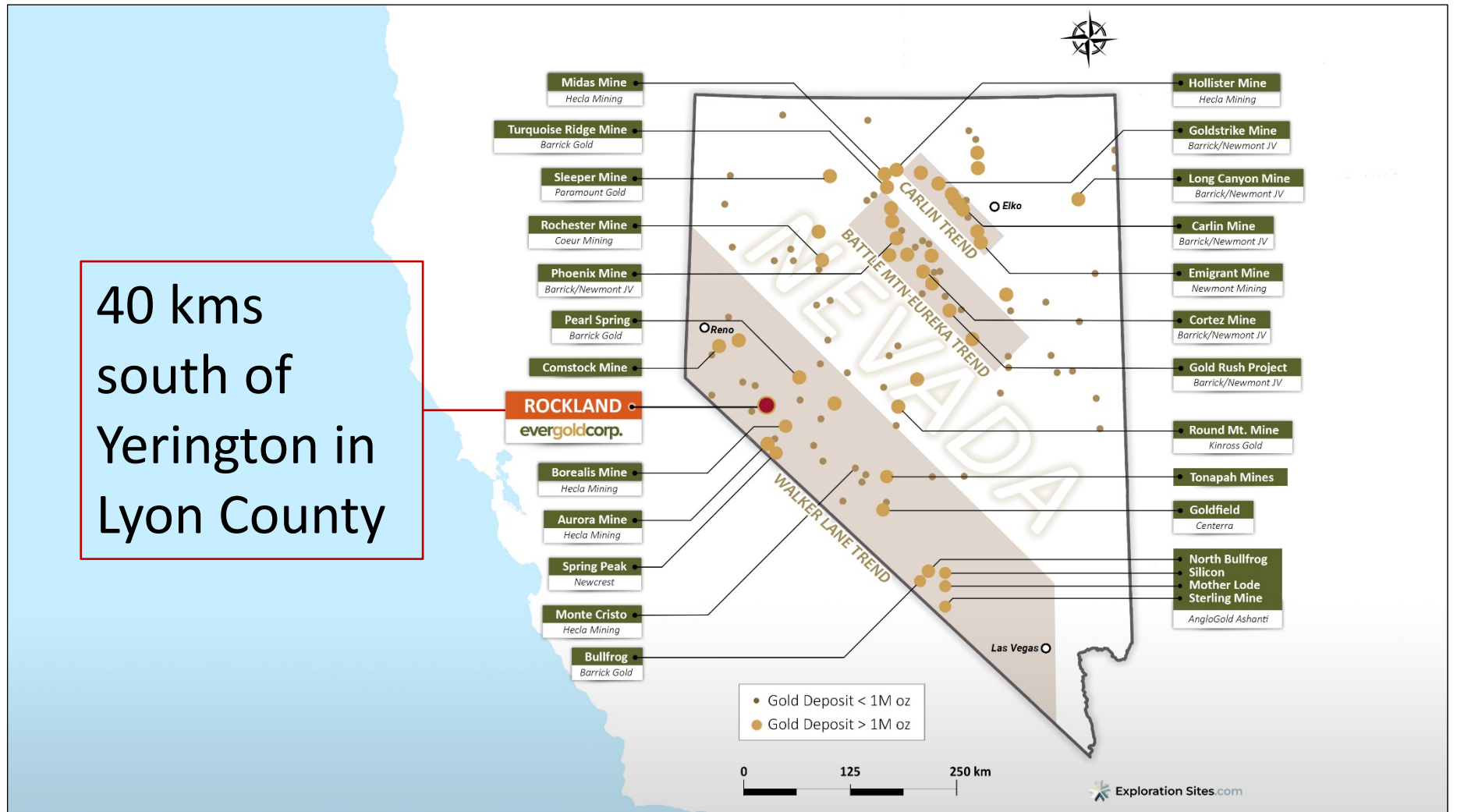
# Rockland

## One of the Best Drill-Ready Projects in the Walker Lane

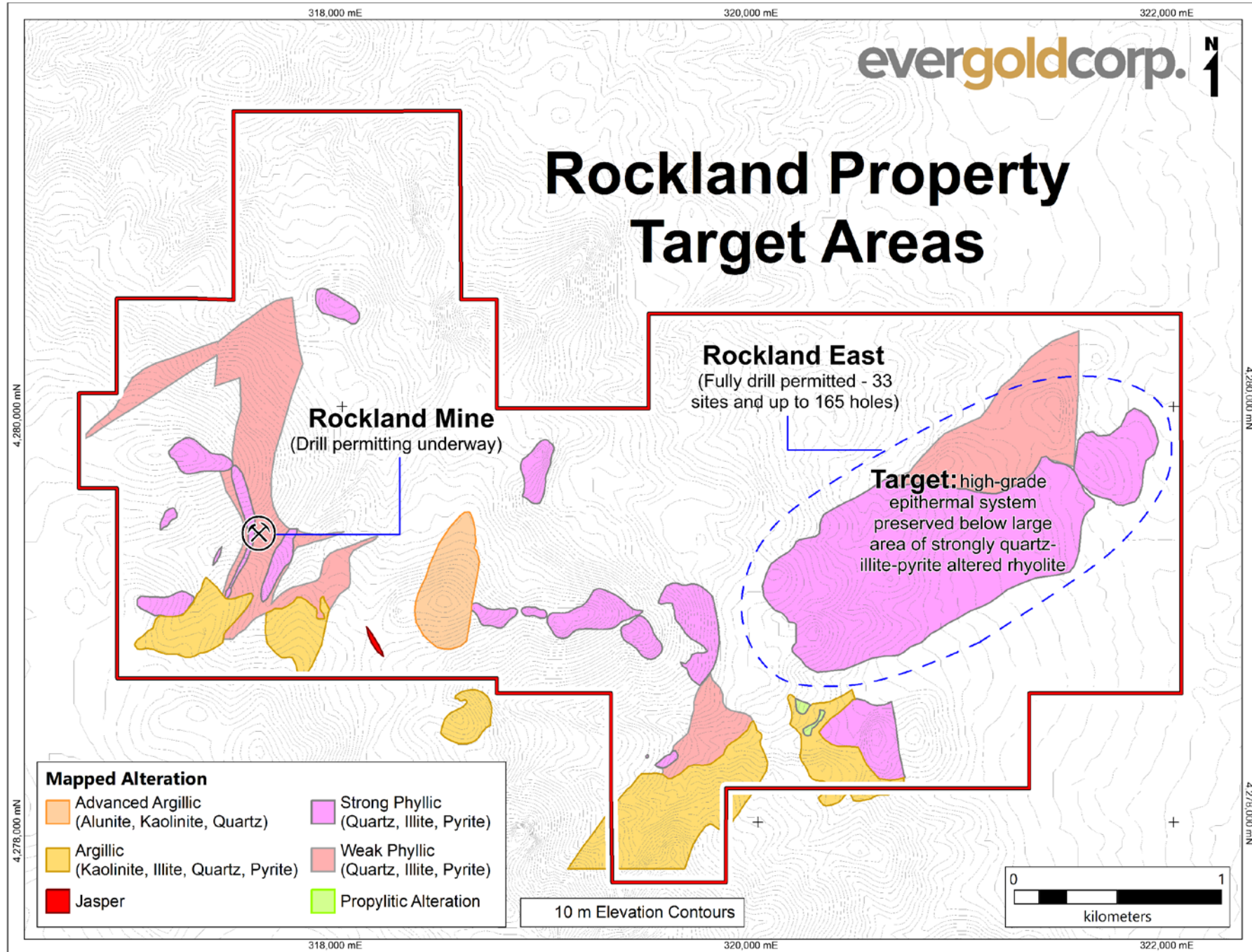
- A large (~800 m long, 200 m wide) gold-silver zone (the “Rockland East Gold Zone” or “REG Zone”) is present that historical operators (2006) only sparsely drilled and appear to have only begun to tap into
- Key historical holes stopped in their best grades and mineralization only because of a shortage of drill pipe
- Their key historical discovery holes delivered impressively long (100-200 m), low-to-moderate-grade (0.5 to 3 g/t Au) intercepts, with local concentrations as much as 20.9 g/t Au and 100 g/t Ag over 1.52 metres
- The REG Zone is overlain by a large blanket-like halo of strongly anomalous gold pathfinder elements As and Sb. This, coupled with down-hole spectroscopy suggests the REG Zone potentially sits above an intact high-grade system, preserved by down-dropping along range front faults
- Moreover, mineralized historical holes nearby and lateral to the REG Zone suggest it could be much larger than presently understood

# Rockland Location

40 kms south of Yerington in Lyon County



# Rockland Property Target Areas



## Rockland 2023 Exploration Plans

- Newly permitted for up to 33 drill sites and 165 drill holes (~75,000 metres) at Rockland East
- Goal is to drill within, below, along strike of, and lateral to, the REG Zone
- A drill permit for the Rockland Mine area is anticipated for later in 2023 (est. 12 sites for an initial 2,800 metres)

## Rockland Property Mineralization

- Gold and silver mineralization exposed at the Rockland project is related to a low-sulphidation epithermal vein system that formed approximately 6 to 8 million years ago at the western margin of the Great Basin
- Mineralization is spatially and genetically associated with Late Miocene-age rhyolite intrusive activity and occurs in intensely altered rhyolites, associated sedimentary and tuffaceous rocks, and pre-Tertiary granodiorite
- The best gold grades are associated with quartz veins and rhyolite feeder dikes that cut the basement granodiorite and the overlying younger rocks
- Alteration and mineralization is primarily controlled by NNE- to NE-trending structures, which are common orientations of the high-grade veins at the nearby Aurora and Borealis gold-silver mines

## Rockland East Geology

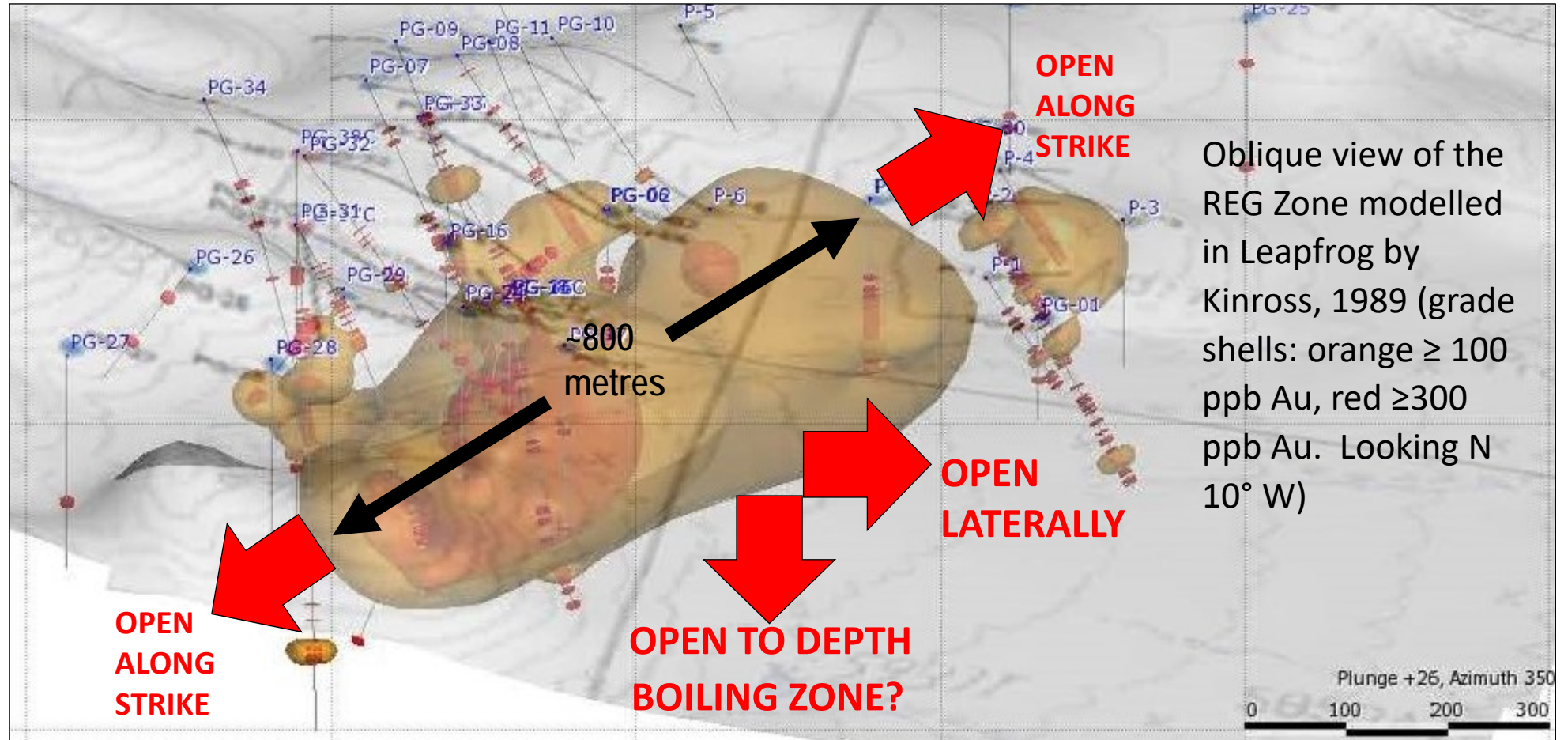
- The Rockland East project area consists of a large NE-trending zone of strong quartz-illite-pyrite+/-kaolinite alteration hosted within and adjacent to a series of five or more coalesced rhyolite domes
- The strongly altered zone is over 900 metres wide and up to 1500 metres long and contains numerous banded crustiform to chalcedonic quartz veins and vein breccias, as well as other silicified and/or sulfidized structures
- Alteration and mineralization is associated with strongly anomalous pathfinder elements typical of the upper portion of a well-mineralized epithermal system (e.g. As up to 3370 ppm; Sb up to 610 ppm; Hg up to 350 ppm)

# Rockland Drilling Backstory

Company	Year Begun	Year Ended	Number of Drill Holes	Total Feet	Total Metres	RC Holes	Core Holes
BHP/Utah International	1987	1989	25	10,136	3,089	25	
Hecla	1988	1989	6	2,845	867	6	
Inmet	1994	1999	29	19,320	5,889	29	
Toquima/Carlin Gold	2004	2009	0	-	-	0	
Romarco	2005	2008	9	13,109	3,968	6	3
<b>Totals</b>			<b>69</b>	<b>45,410</b>	<b>13,813</b>	<b>66</b>	<b>3</b>



# This is the Rockland East Gold Zone



## Some Historical REG Zone Intercepts<sup>1</sup>

- 182.9 metres of 0.40 grams per tonne (g/t) Au in Romarco hole PG-33
- 109.7 metres of 0.96 g/t Au including 12.2 metres of 1.88 g/t Au in Romarco hole PG-32
- 59.4 metres of 1.03 g/t Au including 6.1 metres of 4.80 g/t Au in BHP hole RK-11
- 39.6 metres of 1.16 g/t Au including 3.1 metres of 8.56 g/t Au in BHP hole RK-17
- 1.5 metres of 19.80 g/t Au in Romarco hole PG-36C
- 1.5 metres of 5.08 g/t Au and 354 g/t Ag in B2Gold hole RK18-27

<sup>1</sup>. True widths are unknown

Romarco Minerals US Inc.										RC Drill Log										Pine Grove Project	
Hole ID <u>PG-32</u>		Total Depth <u>1440'</u>		Easting <u>320540</u>		Contractor <u>Eklund</u>		Page <u>15</u> of <u>15</u>													
Angle <u>-45</u>		Target Area <u>Discovery Zone</u>		Northing <u>4239206</u>		Driller <u>T. Hager</u>		Collared <u>3/8/06</u>													
Azimuth <u>116</u>		Water <u>235</u>		Elev. (ft.) <u>6260</u>		Geological <u>Reischman</u>		Completed <u>3/14/06</u>													
Depth (ft.)	Assay		Alteration (w-m-s)					Veining %			Oxide (w-m-s)			Sulfide %		Lithology	Description	Drilling Data			
	Au ppm	Ag ppm	silica	clay	kaol	pyritic	sil	brecc	quartz	calc	carbon	Iron	benzene	MoS	pyrite				argente	Color	log
1400-1425	3.910	17.4															lt-med	Tr		lt-med. gry, variably zip-cell & silica-flooded epiclastics - Tr	
828	1.835	7.4																		abun. rhyolite clasts	
32-1	2.650	8.3																		1-2% v.f.g. disc py	
225	3.180	6.4																		wtly carbonaceous?	
826	1.150	8.1																			
827	0.688	6.0																		lt-med. gry, mod-str zip-cell & variably silica flooded rhyolite?	
829	1.080	5.8																		rhyolite pyroclastics?	
830	0.598	5.7																		0.5% v.f.g. disc py	
1440																					
45																					

Drill log

T.D. 1440' 3/14/06 10:00 AM  
No more pipe!

PG	814		1360	1365	1.155	10			
PG	815		1365	1370	2.14	12			
PG	816		1370	1375	3.07	23.5	1.35	40'/1335-1375'/1.35 ppm Au	
PG	817		1375	1380	0.429	5.3	10.925	40'/1335'-1375'/10.9 ppm Ag	
PG	818		1380	1385	0.777	7.2			
PG	819		1385	1390	0.469	4.4			
PG	820		1390	1395	0.52	4.8			
			95	1400	0.475	6.8			
			00	1405	3.91	17.4	1.886375	40'/1400-1440'/1.88 ppm Au	
			05	1410	1.835	7.4	8.1375	40'/1400-1440'/8.14 ppm Ag	
PG	824		1410	1415	2.65	8.3			
PG	825		1415	1420	3.18	6.4			
PG	826		1420	1425	1.15	8.1			
PG	827		1425	1430	0.688	6			
PG	829		1430	1435	1.08	5.8	0.958889	360'/1080-1440'/0.959 ppm Au	
PG	830		1435	1440	0.598	5.7	6.729167	360'/1080-1440'/6.73 ppm Ag	

Down-hole depth in feet

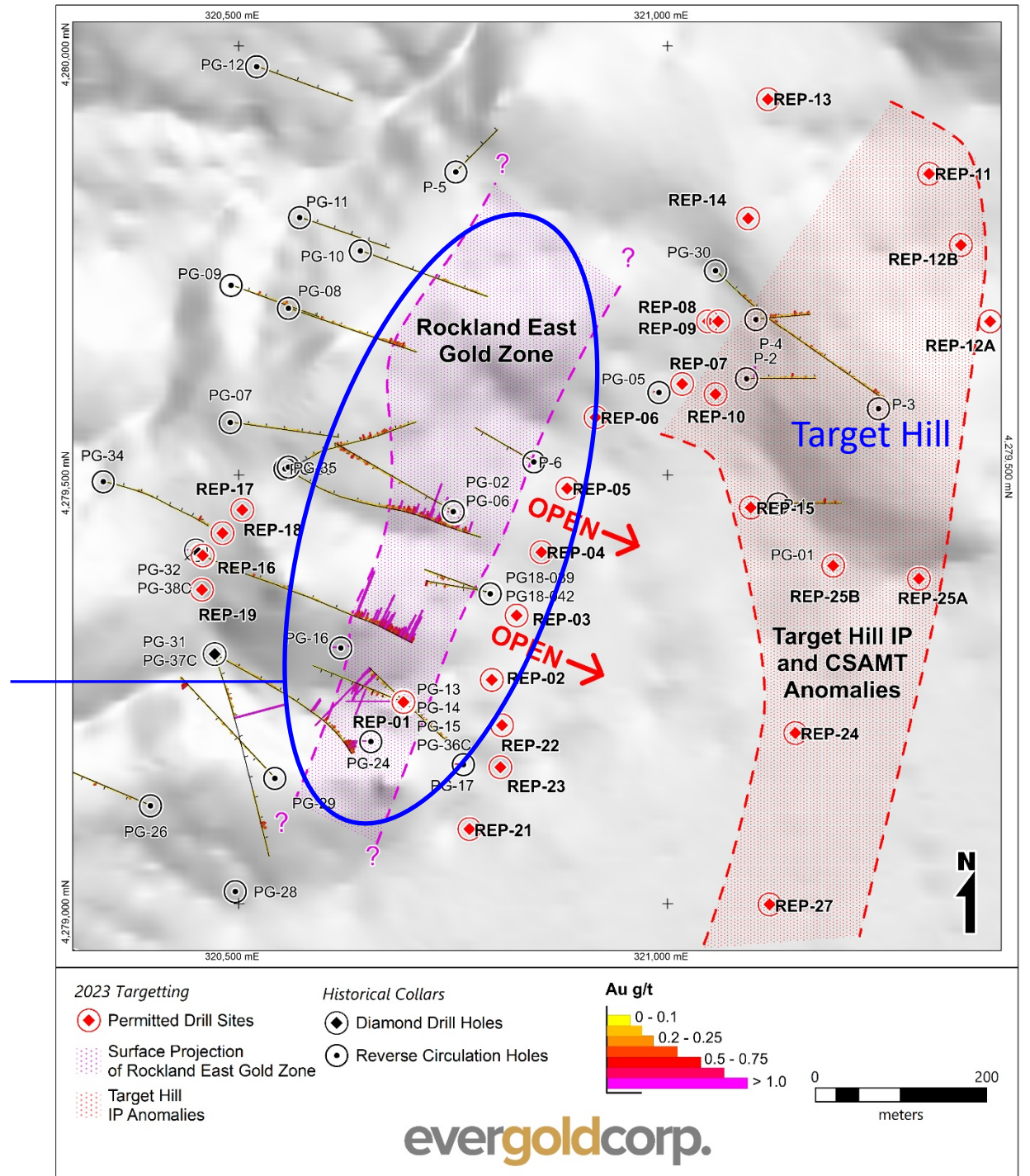
Au assays left, silver right, ppm

Key historical holes such as PG-32 (Romarco, 2006), simply ran out of pipe in their best values

# REG Zone and Nearby Targets Plan View

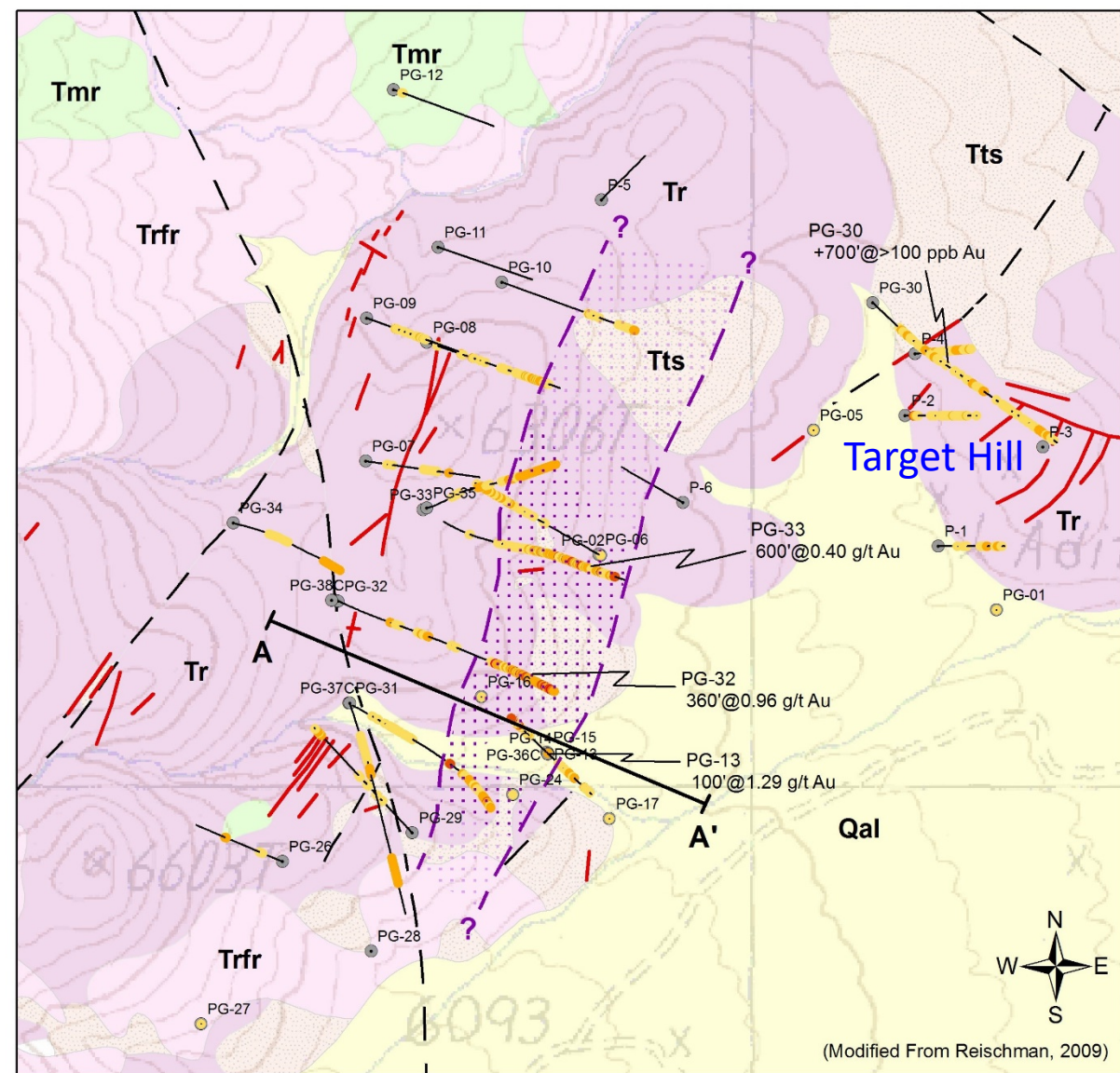
Area of Leapfrog  
model on previous  
slide

Permitted Evergold  
drill sites in red

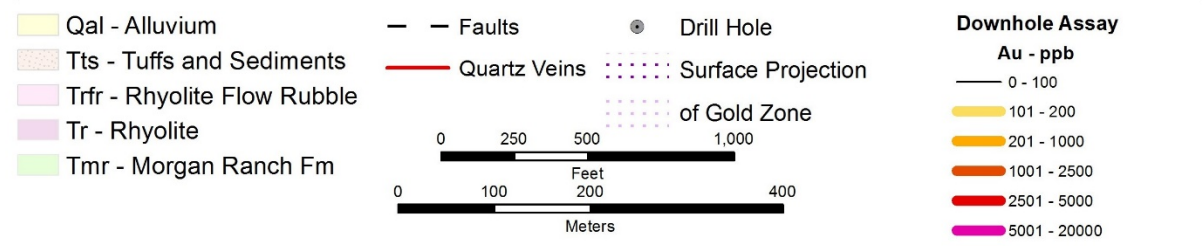


# REG Zone and Nearby Targets Plan View

( Showing location of  
section A-A', see next  
slide)

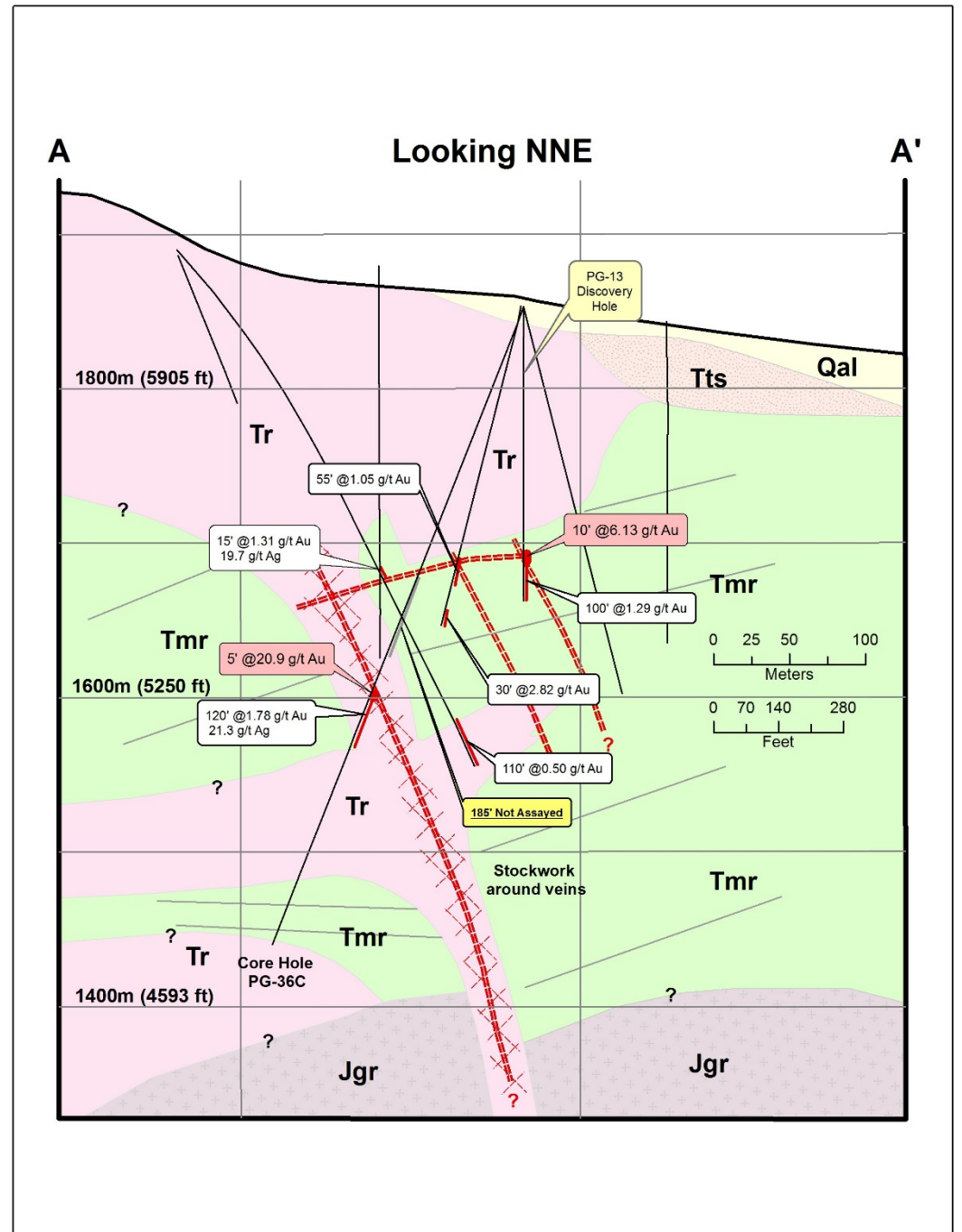


(Modified From Reischman, 2009)



# REG Zone Section A-A'

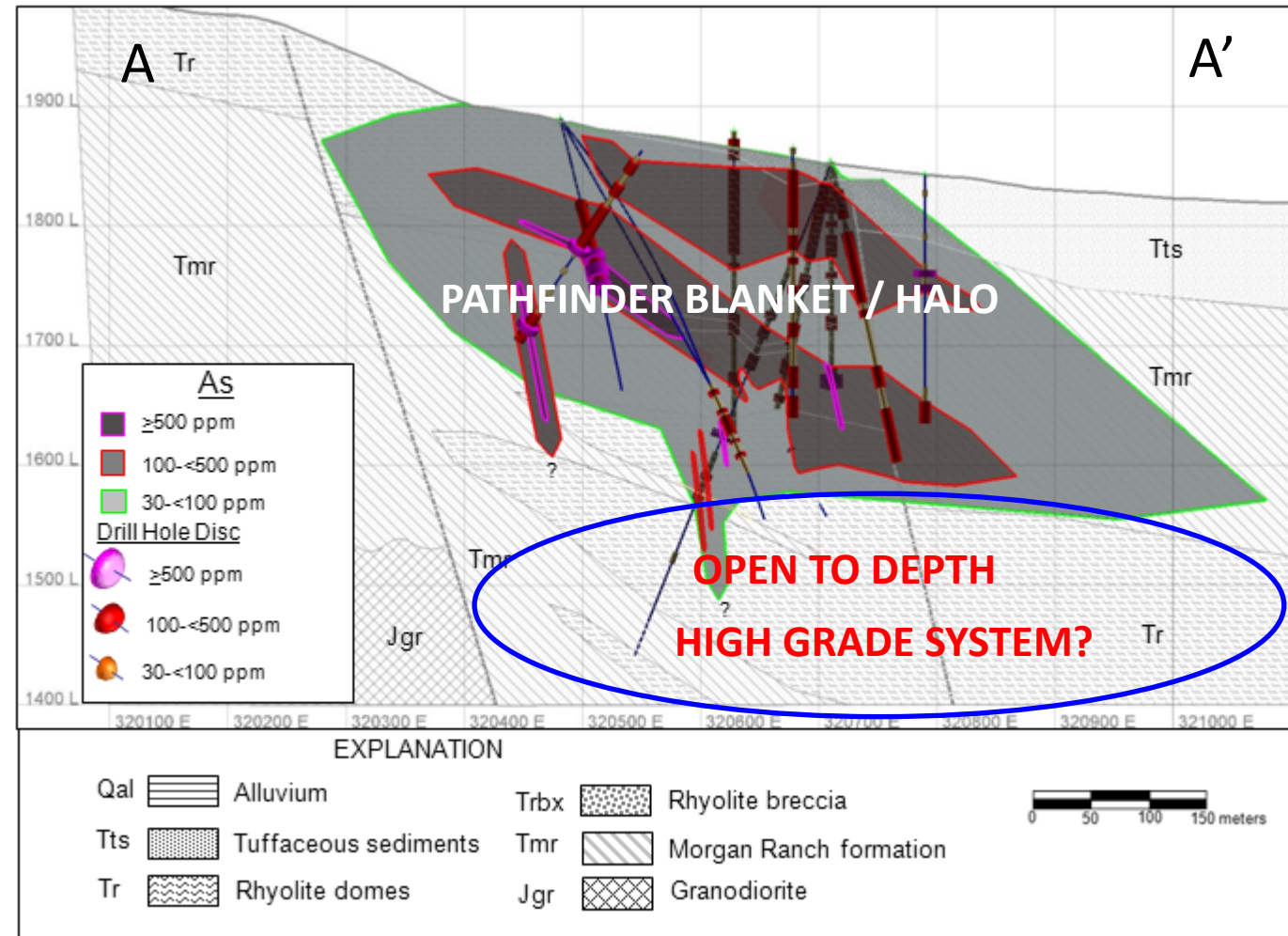
(see previous slide for location)



# REG Zone Section A-A'

(see slide 10 for location)

Arsenic trace element  
pathfinder 'blanket' above a  
high grade system?



View of the Rockland East Target Area.  
Year-Round Drive-on Access, Nearby Roads &  
Power, Gentle Topography



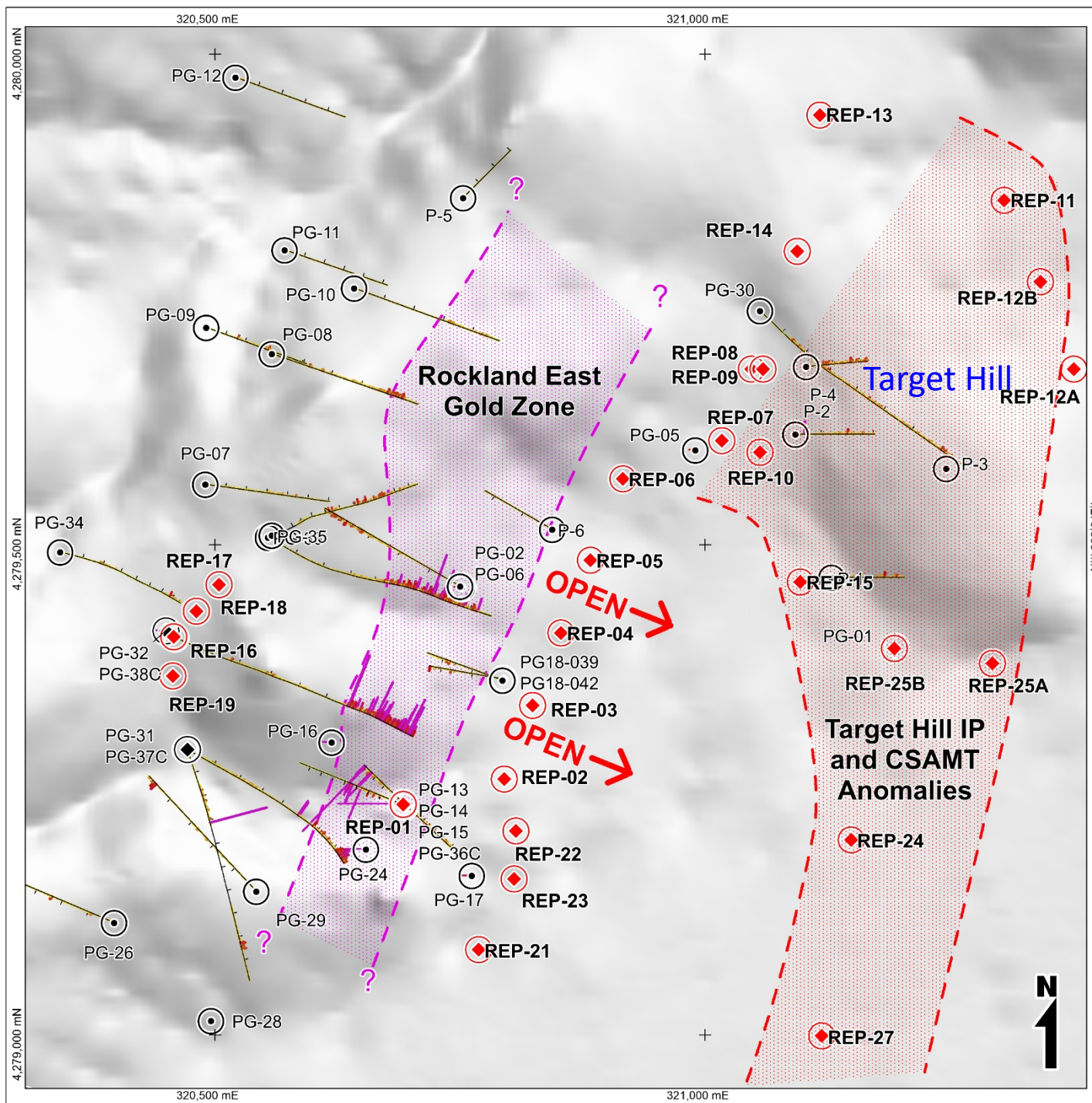


# Rockland East Gold Zone Discovery Drilling 2006



# Rockland East 2023 Exploration Plans

Permitted  
Evergold drill  
sites in red



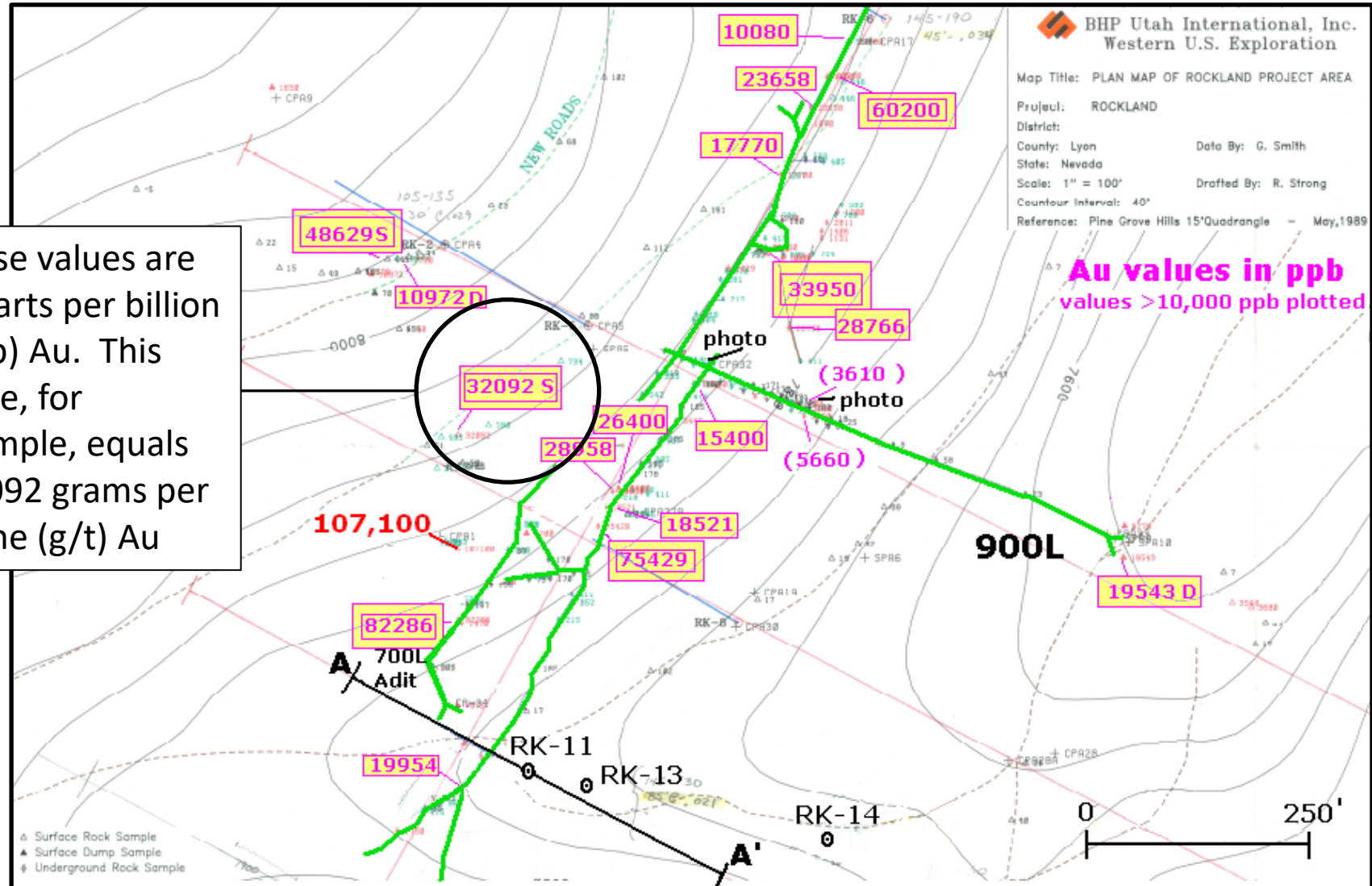
## Rockland Mine Target Area

- Small scale high-grade past producer from the Wild West era, estimated 50,000 oz historical production
- Considerable exploration potential
- Drill permit anticipated for late 2023



# Rockland Mine Workings Plan View

## High-Grade Sample Results, BHP 1989



# Rockland Mine Cross-Section A-A'

(See previous slide for location of section)

Looking NNE

